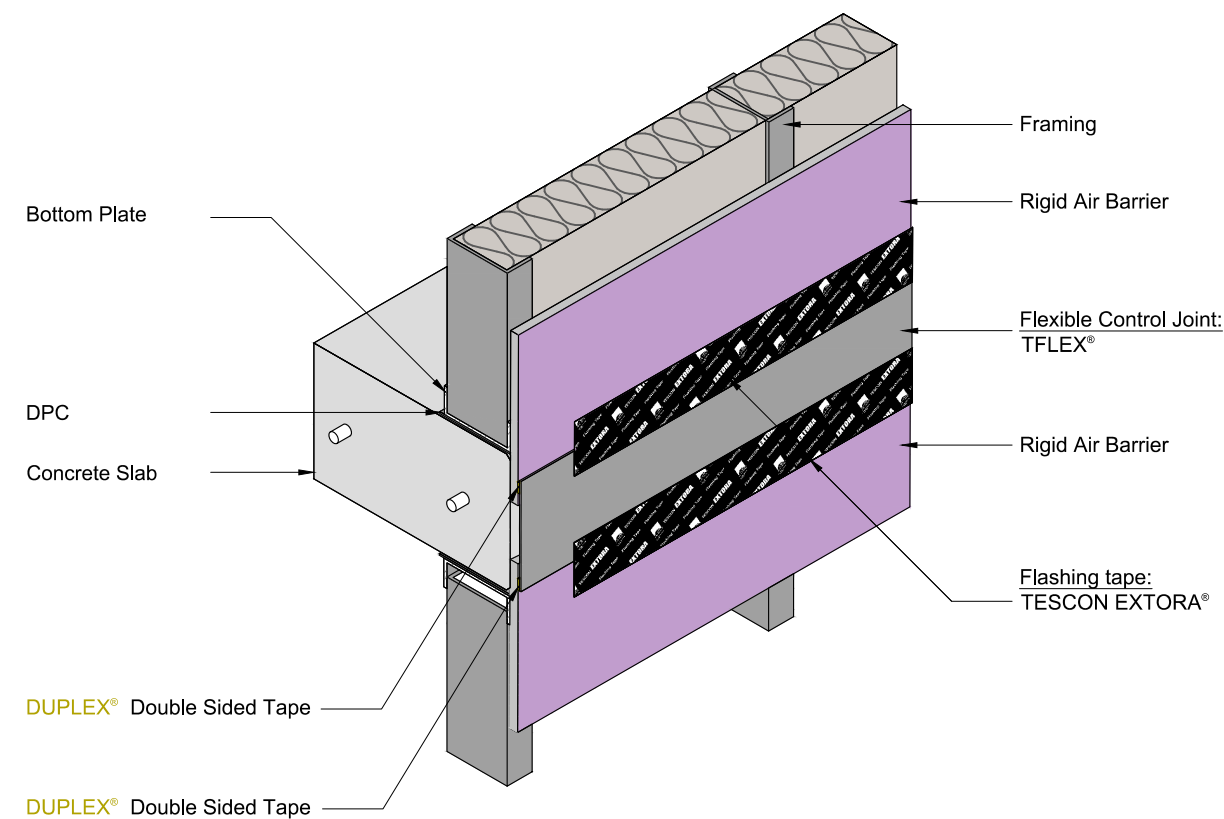
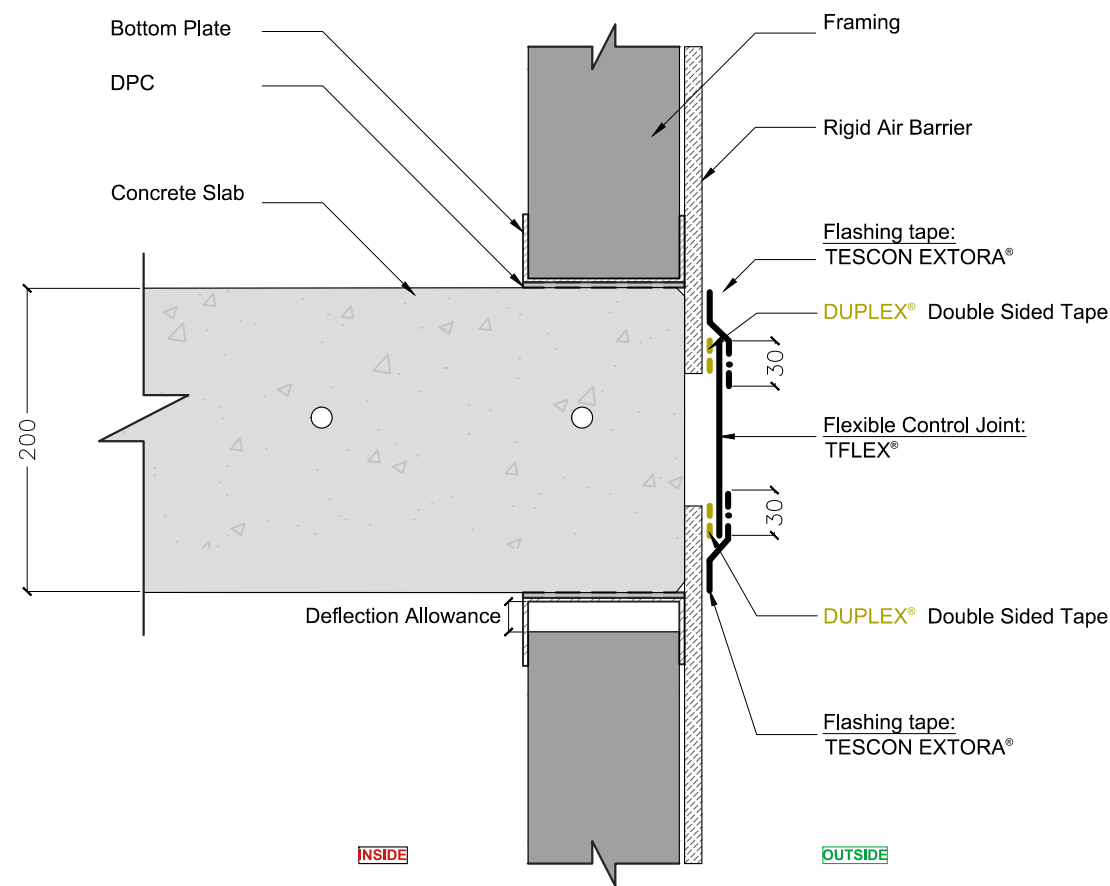


CJ3613 Façade Control Joint

TFLEX® with TESCON EXTORA® for Slab Deflection and Seismic Displacement

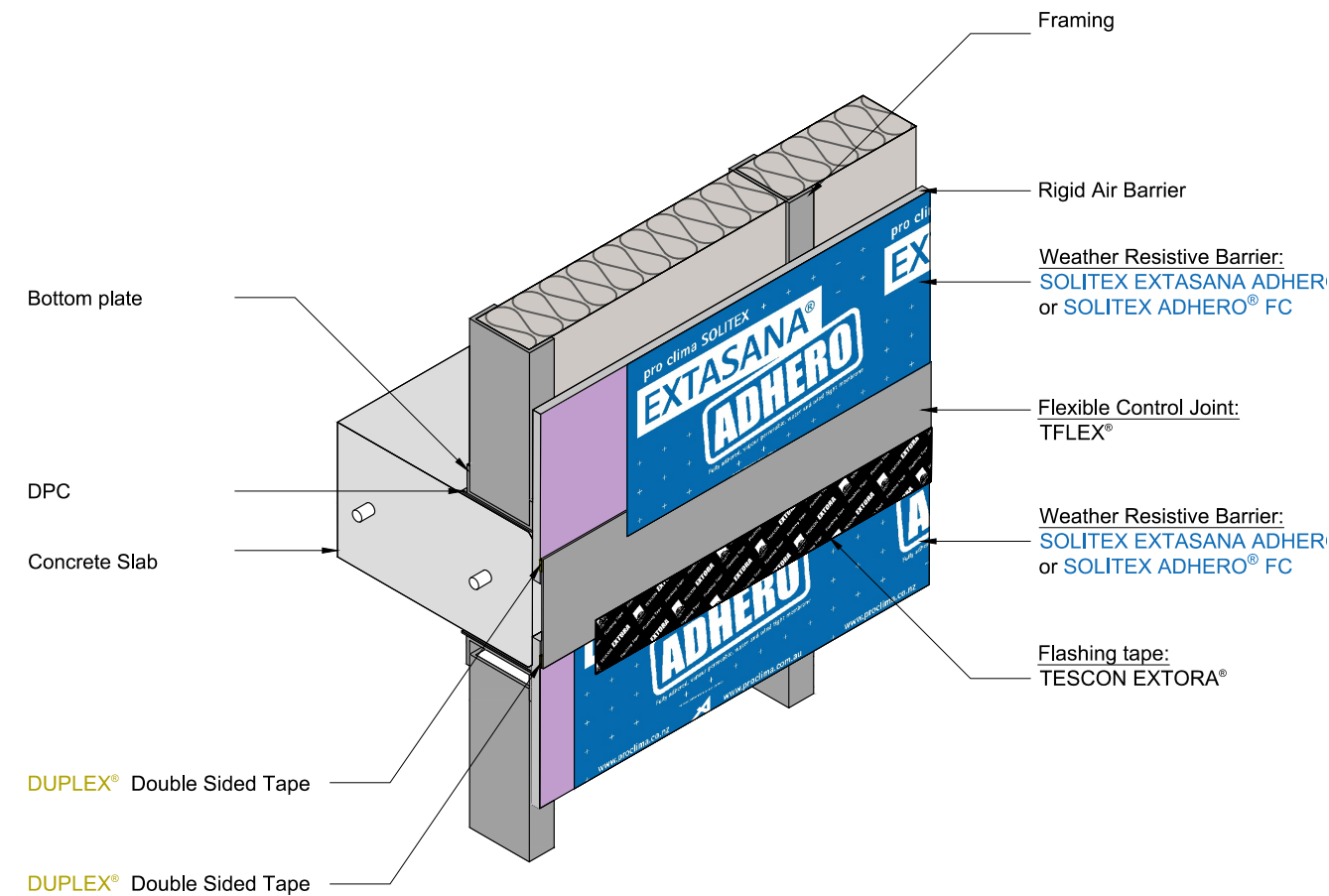
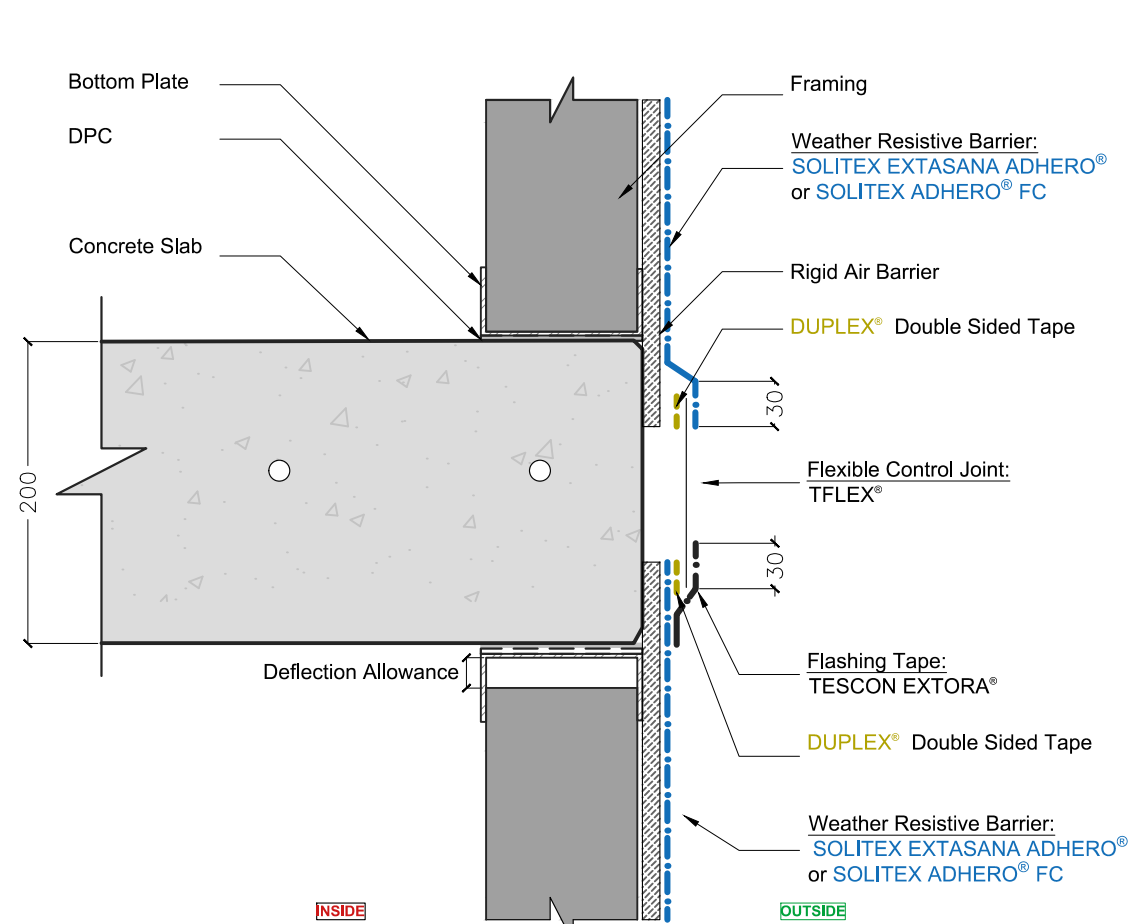
DISCLAIMER
Detail sketch is generic, representing suggested best practices for pro clima materials, and does not represent a specific job site condition and therefore may not be applicable to certain projects. Detail sketch is designed for use as a reference and must be approved by the designer/ consultant of record for each project prior to installation by the subcontractor. Changes and approvals of pro clima details are the sole responsibility of the designer/consultant of record. Pro clima is not the designer of record for building enclosure details and takes no responsibility for the accuracy or interpretation of actual project site conditions.



CJ3614 Façade Control Joint

TFLEX with SOLITEX ADHERO FC & TESCON EXTORA for Slab Deflection and Seismic Displacement

DISCLAIMER
Detail sketch is generic, representing suggested best practices for pro clima materials, and does not represent a specific job site condition and therefore may not be applicable to certain projects. Detail sketch is designed for use as a reference and must be approved by the designer/ consultant of record for each project prior to installation by the subcontractor. Changes and approvals of pro clima details are the sole responsibility of the designer/consultant of record. Pro clima is not the designer of record for building enclosure details and takes no responsibility for the accuracy or interpretation of actual project site conditions.



CJ3615 Façade Control Joint

TFLEX® with TESCON EXTORA® over SOLITEX ADHERO FC® for Slab Deflection and Seismic Displacement

DISCLAIMER
Detail sketch is generic, representing suggested best practices for pro clima materials, and does not represent a specific job site condition and therefore may not be applicable to certain projects. Detail sketch is designed for use as a reference and must be approved by the designer/ consultant of record for each project prior to installation by the subcontractor. Changes and approvals of pro clima details are the sole responsibility of the designer/consultant of record. Pro clima is not the designer of record for building enclosure details and takes no responsibility for the accuracy or interpretation of actual project site conditions.

