



SOLITEX® ADHERO VISTO

Temporary flooring protection guide



Temporary protection for permanent durability

Stop Moisture Related Issues Before They Begin



SOLITEX® ADHERO VISTO is a temporary weather-protection membrane designed to shield the building structure from excessive rain and moisture exposure during construction.

This protective layer is not designed to be removed and will remain under the floor finishings.

The membrane is suitable for up to 6 weeks of UV exposure and provides reliable defense against liquid water while still maintaining the drying potential of the structure through vapour diffusion.

The clear film allows set-out, service placement, and inspection throughout the framing stage.

Because SOLITEX® ADHERO VISTO is an adhesive membrane, we cannot recommend the use of adhesive-bonded flooring systems directly onto SOLITEX® ADHERO VISTO. Mechanical fixing or floating systems should be considered where compatible and in accordance with flooring-manufacturer requirements.

Timber is a moisture-sensitive building material, yet its management is often overlooked during the framing stage of construction. In most projects, timber frames and floors are left exposed to the weather for extended periods, allowing significant wetting during rain events. Because of a lack of drainage, water commonly ponds on the floor system.

Whether using structural particleboard or cross-laminated timber (CLT) floor panels, prolonged wetting can compromise the structural integrity of these moisture-sensitive components. Particleboard flooring can swell, delaminate, or lose structural performance, while CLT can experience fibre saturation, dimensional movement, resin bond weakening, and long-term durability issues if high moisture levels persist.

Timber's high moisture storage capacity creates a less discussed risk, limited drying. Even once the building is wrapped, lined, and ostensibly weathertight, the previously absorbed moisture remains locked inside the structure. This moisture must eventually redistribute or dry, often driving localised humidity pockets within the building envelope. These conditions significantly increase the risk of mould growth, decay, and poor indoor air quality, sometimes months after the rain event and even after the building is occupied.

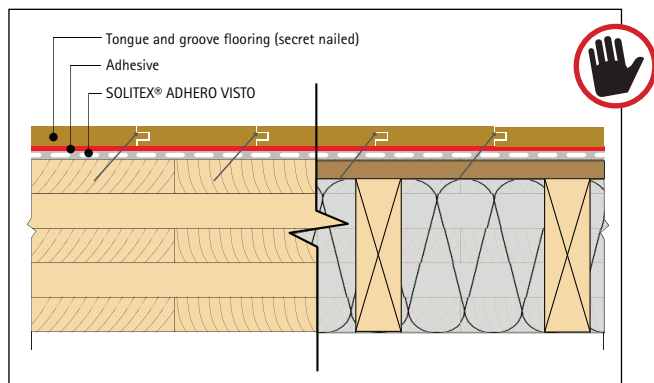
If you wouldn't leave your tools out in the rain, don't leave your timber floor exposed either. Moisture-sensitive structural elements require protection from the moment they go up until the roof goes on. With a clear plan of action and high-quality temporary protection, you can significantly improve the health and durability of your structure while avoiding costly rectification and remediation down the track.

SOLITEX® ADHERO VISTO provides the first line of defense. It is used extensively across Australia from some of the country's most iconic mass-timber buildings to thousands of residential projects. Safeguard framing, sheathing, and floor systems during construction by keeping timber dry and allowing controlled drying when wet. SOLITEX® ADHERO VISTO helps ensure a more durable, healthier building from day one.

For more information visit www.proclima.com.au or contact us at welcome@proclima.com.au.

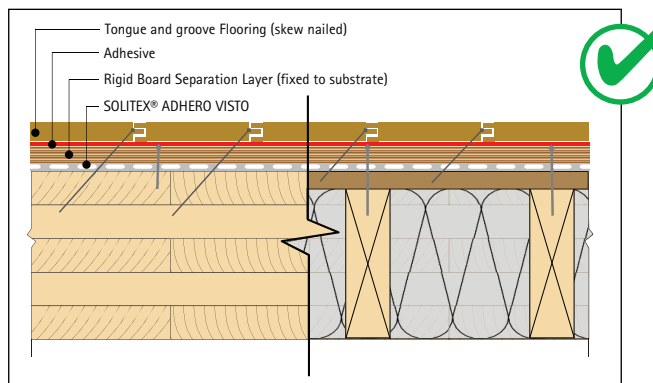


Flooring Types



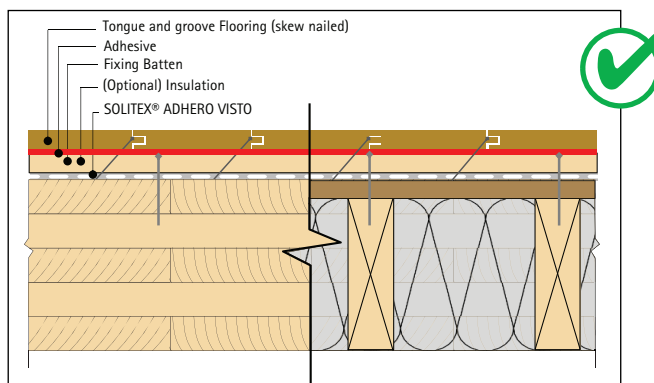
Timber floor fixed with adhesive

Tongue and groove flooring systems that require adhesive should not be used on SOLITEX® ADHERO VISTO.



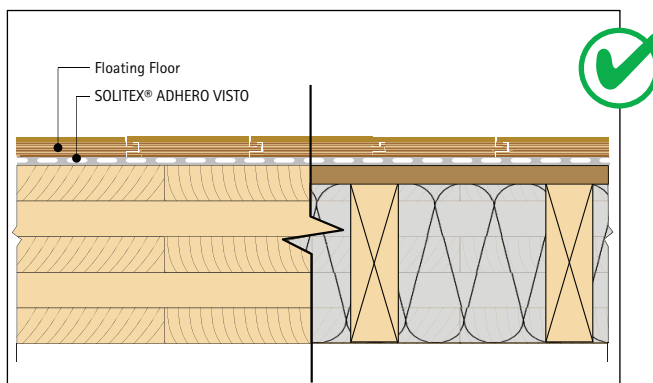
Timber Floor Fixed with Adhesive Over a Board

After the roof is built and the floors are protected, a dry rigid board can be fixed down to accept the flooring and adhesive, as required by the flooring manufacture.



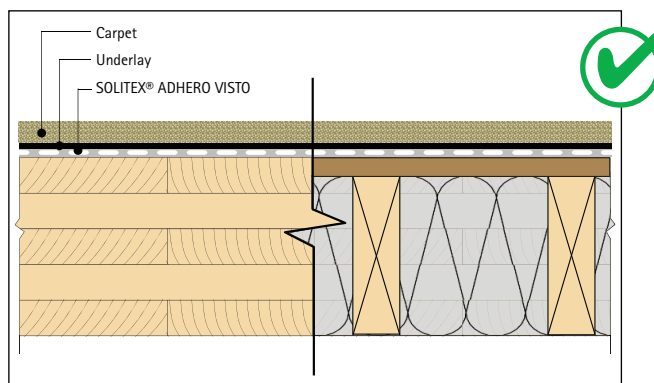
Timber Floor Fixed over Battens

Battening on top of the SOLITEX® ADHERO VISTO protection layer will allow for the use of adhesive under the fixing location of the flooring system.



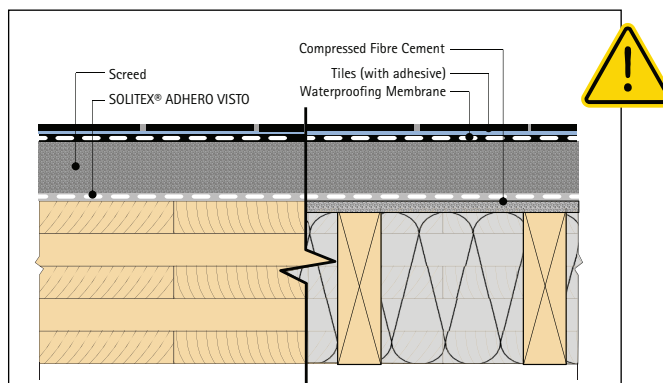
Floating Floor

Floating floor systems are a popular and affordable choice for engineered floors. Floating floors, including underlays, are compatible with SOLITEX® ADHERO VISTO if installed as required by the flooring manufacture.



Carpet and Underlay

Carpet is a great choice for floor systems in bedrooms and living areas for both acoustics and comfort. This flooring type is compatible with SOLITEX® ADHERO VISTO floor protection.



Screed (with Tiles)

SOLITEX® ADHERO VISTO is suitable for use under a cement screed for wet areas and tiles. As there is moisture in the screed when layered, it is critical to perform a hygrothermal simulation. This will assess the long-term risk of moisture in the timber.



Pro Clima Australia Pty Ltd
1800 PRO CLIMA (776 254)
Technical: support@proclima.com.au
General: welcome@proclima.com.au
www.proclima.com.au



This document is the property of Pro Clima Australia Pty Ltd
and must not be copied without permission.

This document is a guideline only and is subject to change without notice.

Please refer to www.proclima.com.au for the latest version.