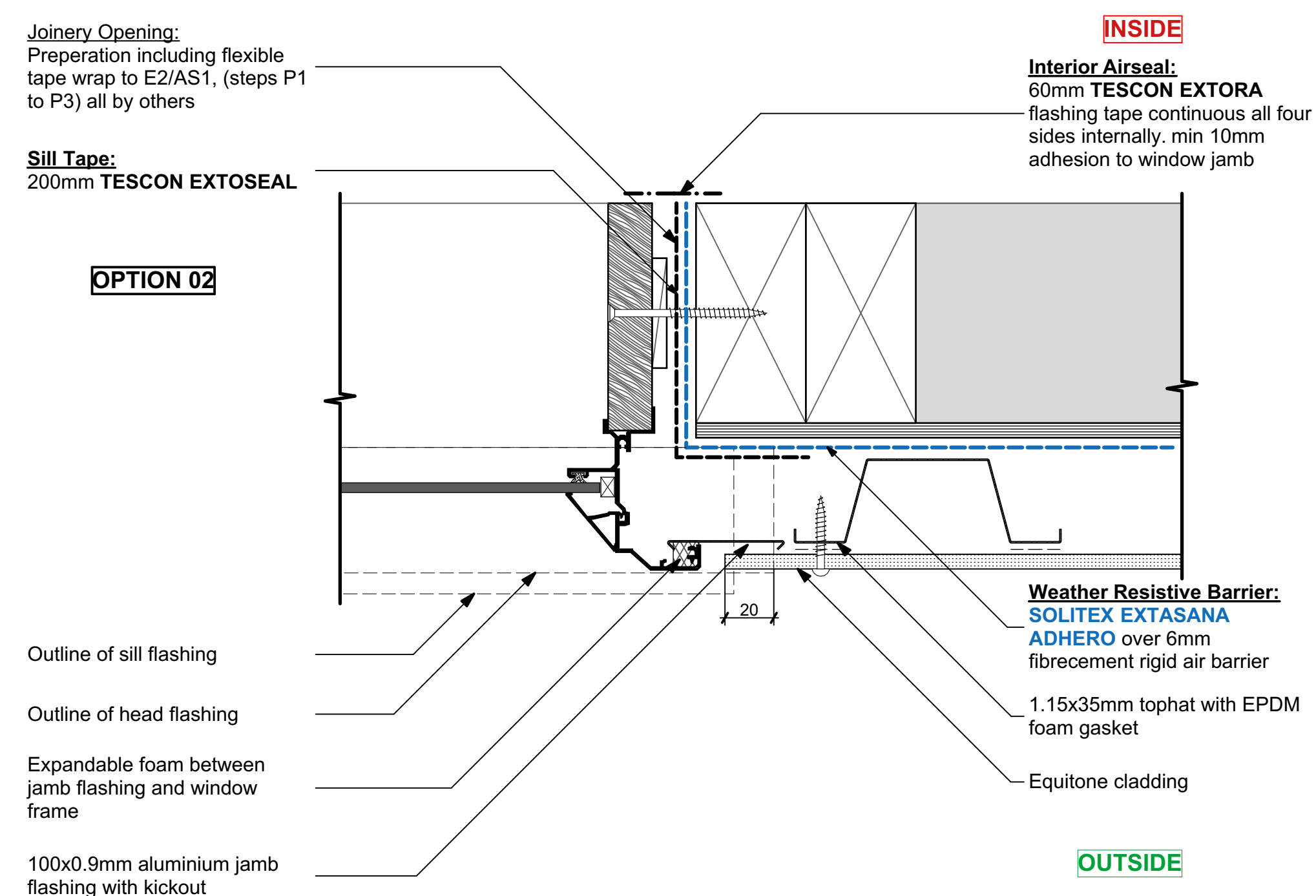
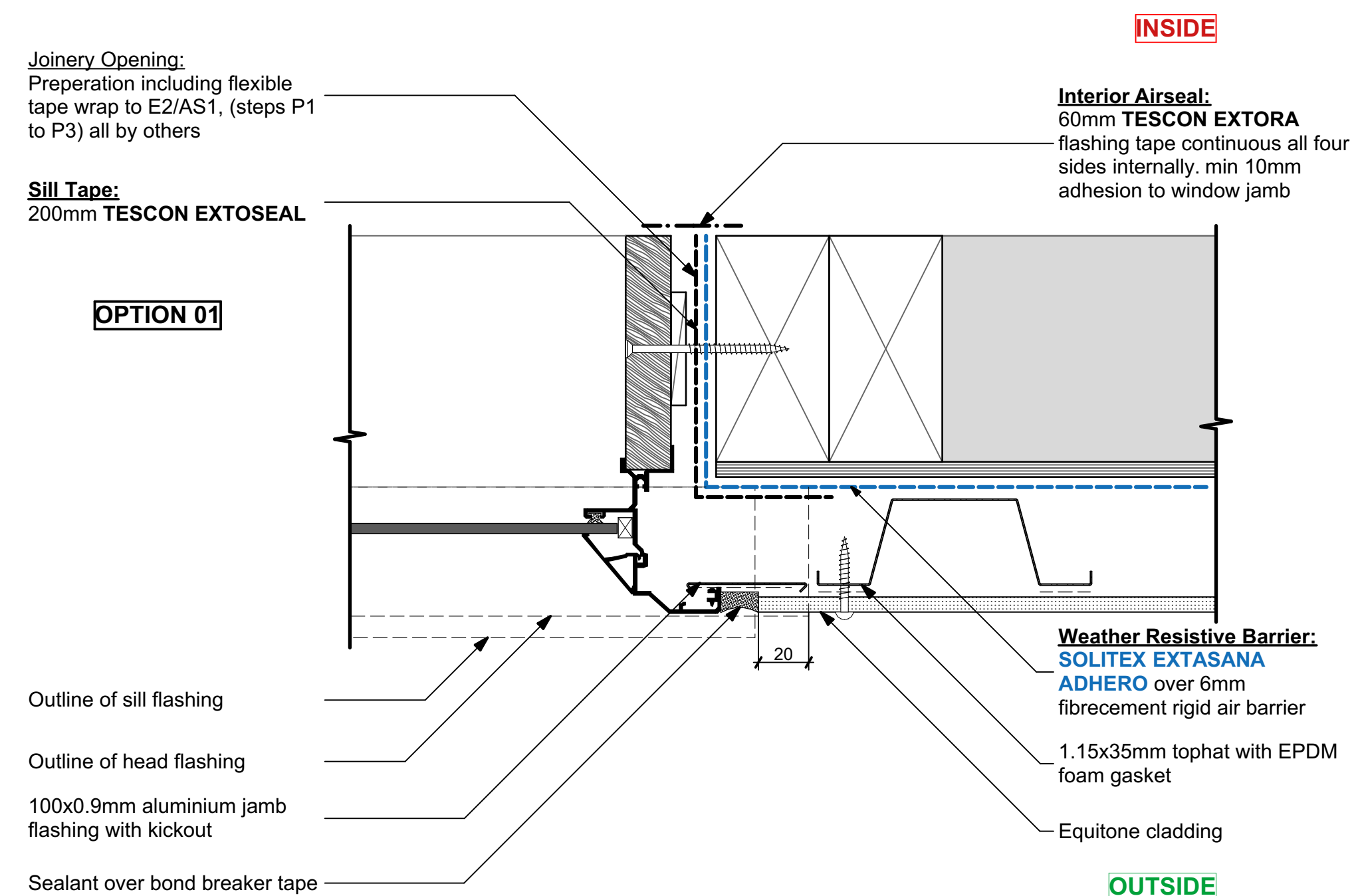
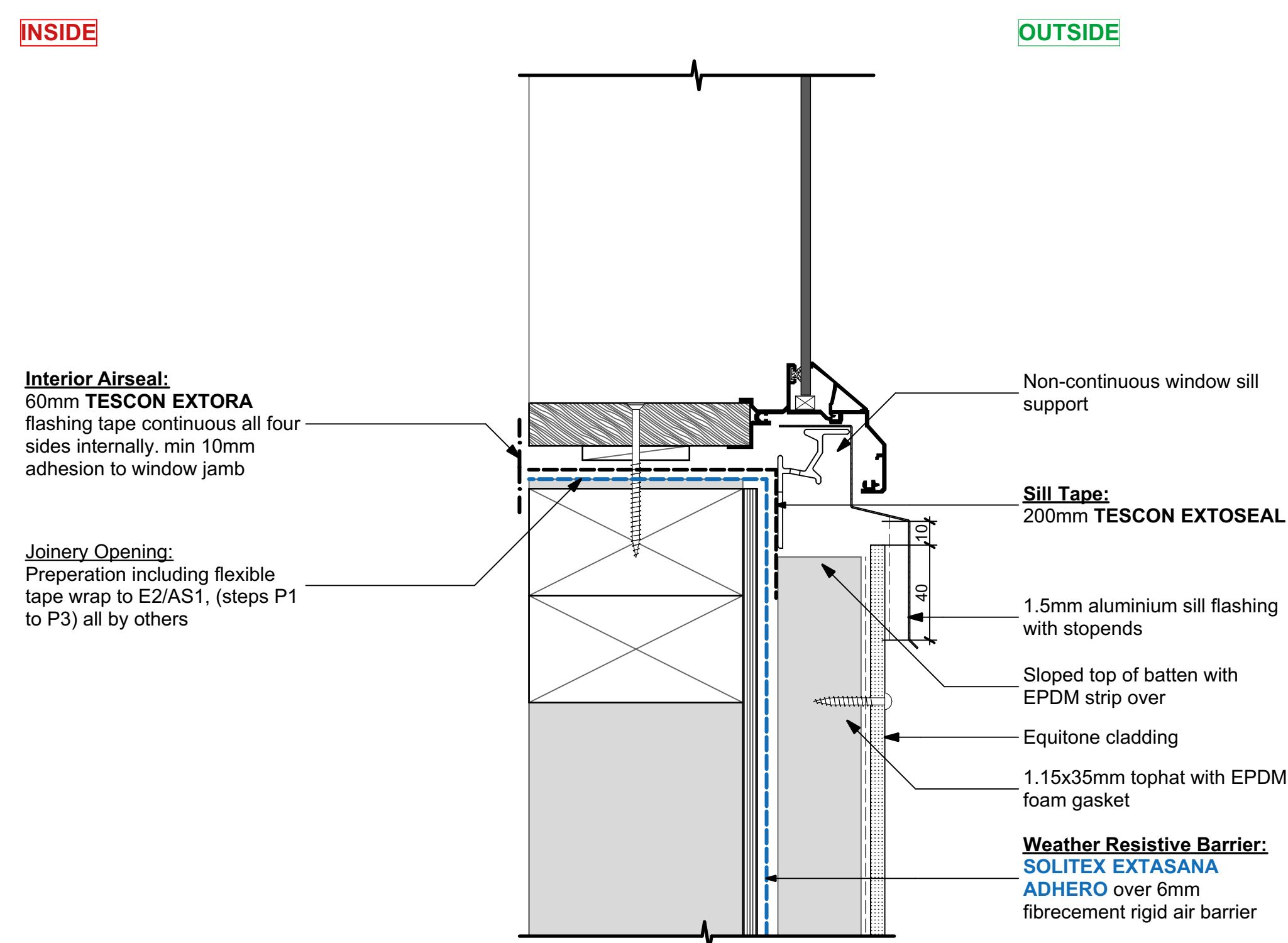
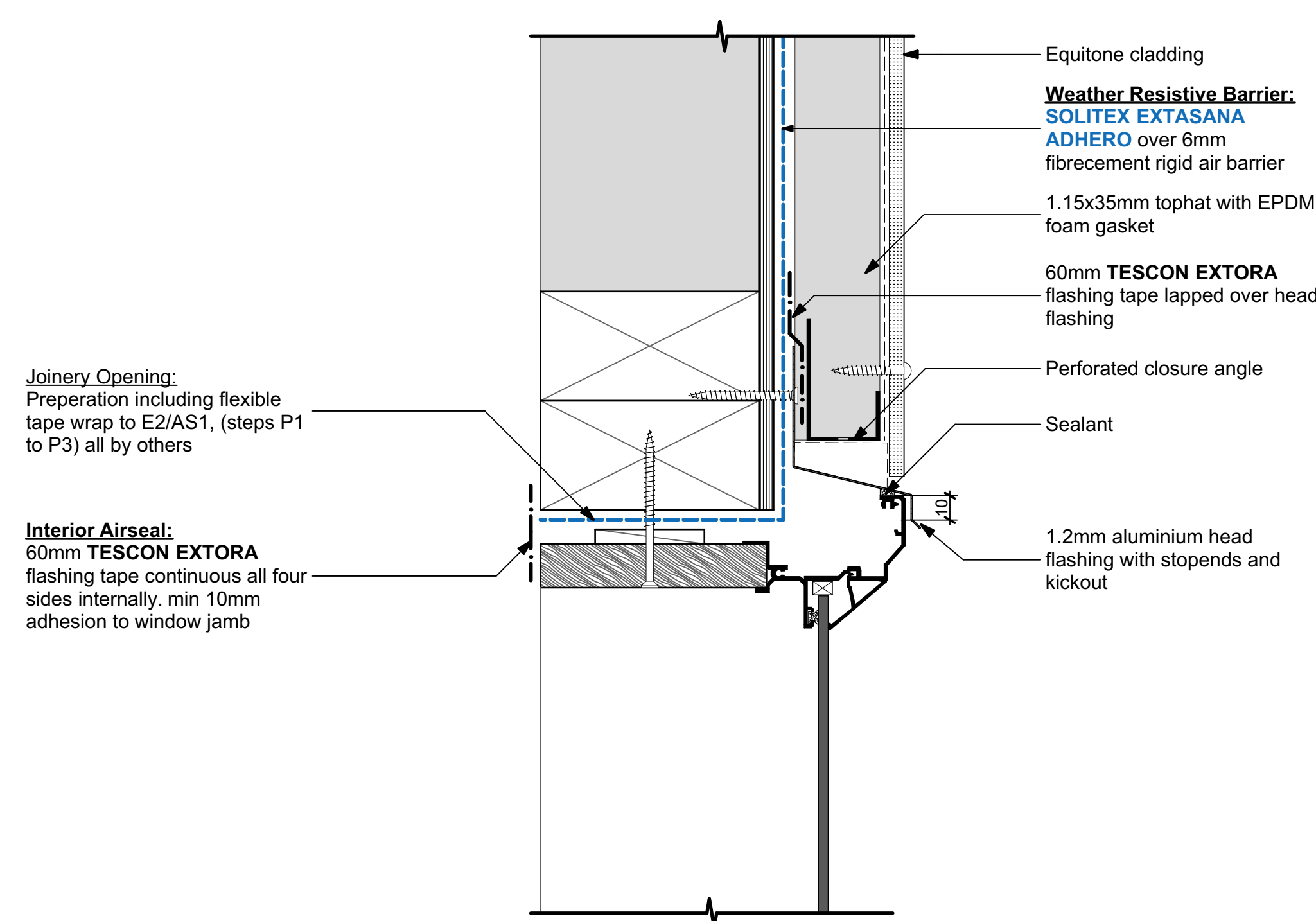


# ES4244 Residential Flush Aluminium Window on Timber Structure

## Weathertight Window Connection - TESCON EXTORA® Back Seal



**Details derived from:**  
E2/VM2 testing of cladding system installation details for 8mm Equitone on 35 mm x 1.15 BMT Zincalume Tophat cavity battens for Etex Group

Test Report No. FT-R1042

Nominated SLS  $\pm 2.25$ kPa.



www.proclima.co.nz  
www.proclima.com.au

Issued: 21/06/2025 Revision: A

Scale: 1:2 @ A1

© This drawing is the property of Pro Clima NZ Ltd &/or Pro Clima Australia Pty Ltd and must not be copied without permission. This drawing is a guideline to provide typical Pro Clima system detailing for AS/NZS 4284 prototype testing only and subject to change without notice. For application to specific projects, thermal and hygrothermal performance should match specific design, materials and climate requirements. These can be confirmed by hygrothermal analysis using software e.g. WUFI®.

Structural, fire and acoustic engineering design and the incorporation of building services (plumbing and electrical) should be signed-off by a suitably qualified engineer to ensure compliance with all health and safety requirements.