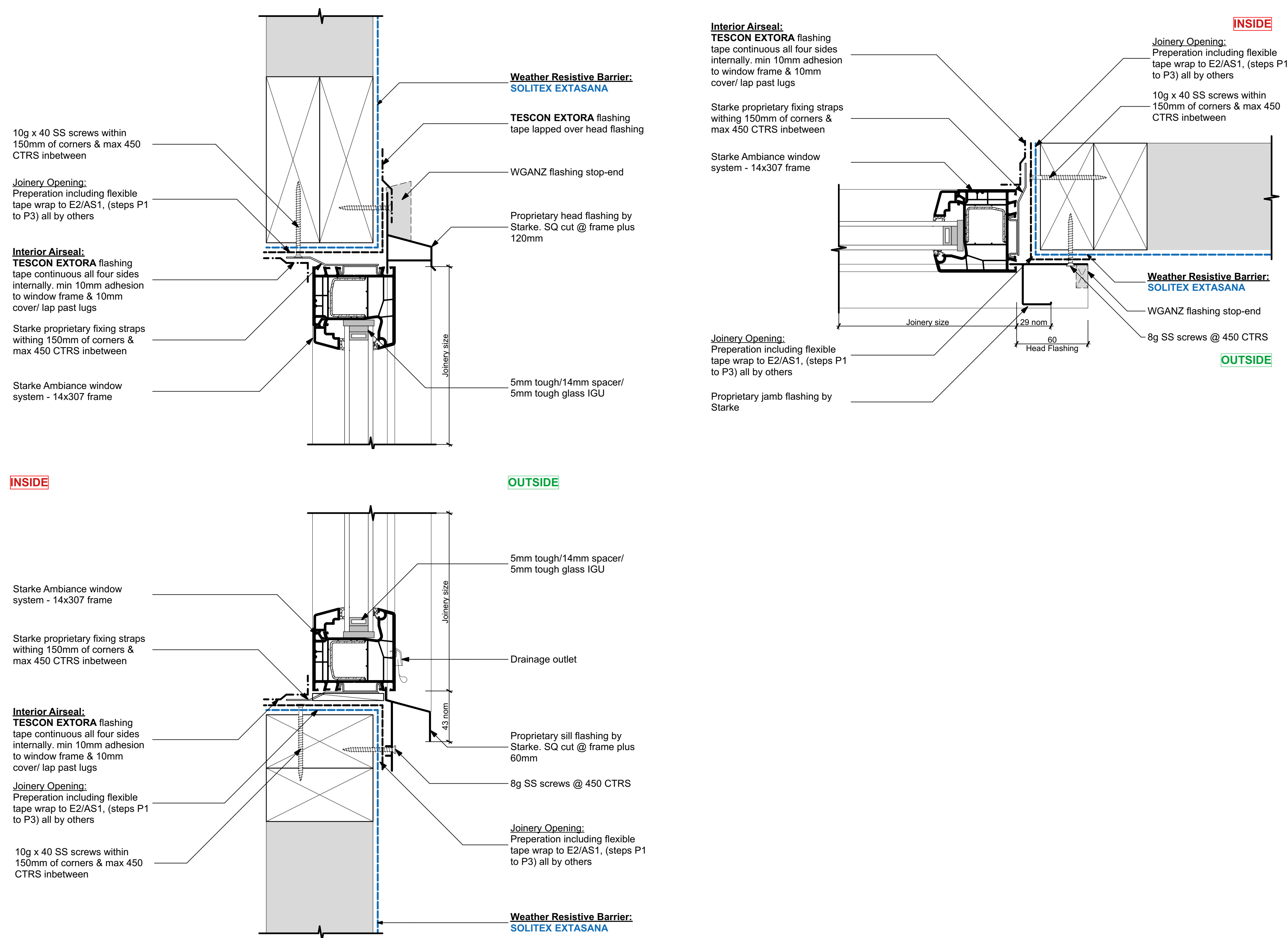


# ES4441 Residential Recessed uPVC Window on Timber Structure

## Weathertight Window Connection - TESCON EXTORA® Back Seal



**Details derived from:**  
Test Report No. SWTL -R0063  
Starke 70- AS/NZS 4284  
Test Procedure SWTM-1.0AS\_NZS 4284 2008 Test Procedure v2  
Nominated SLS ± 2.00 kPa  
Seismic Serviceability ± 12.00 mm at 0.75 Hz



www.proclima.co.nz  
www.proclima.com.au

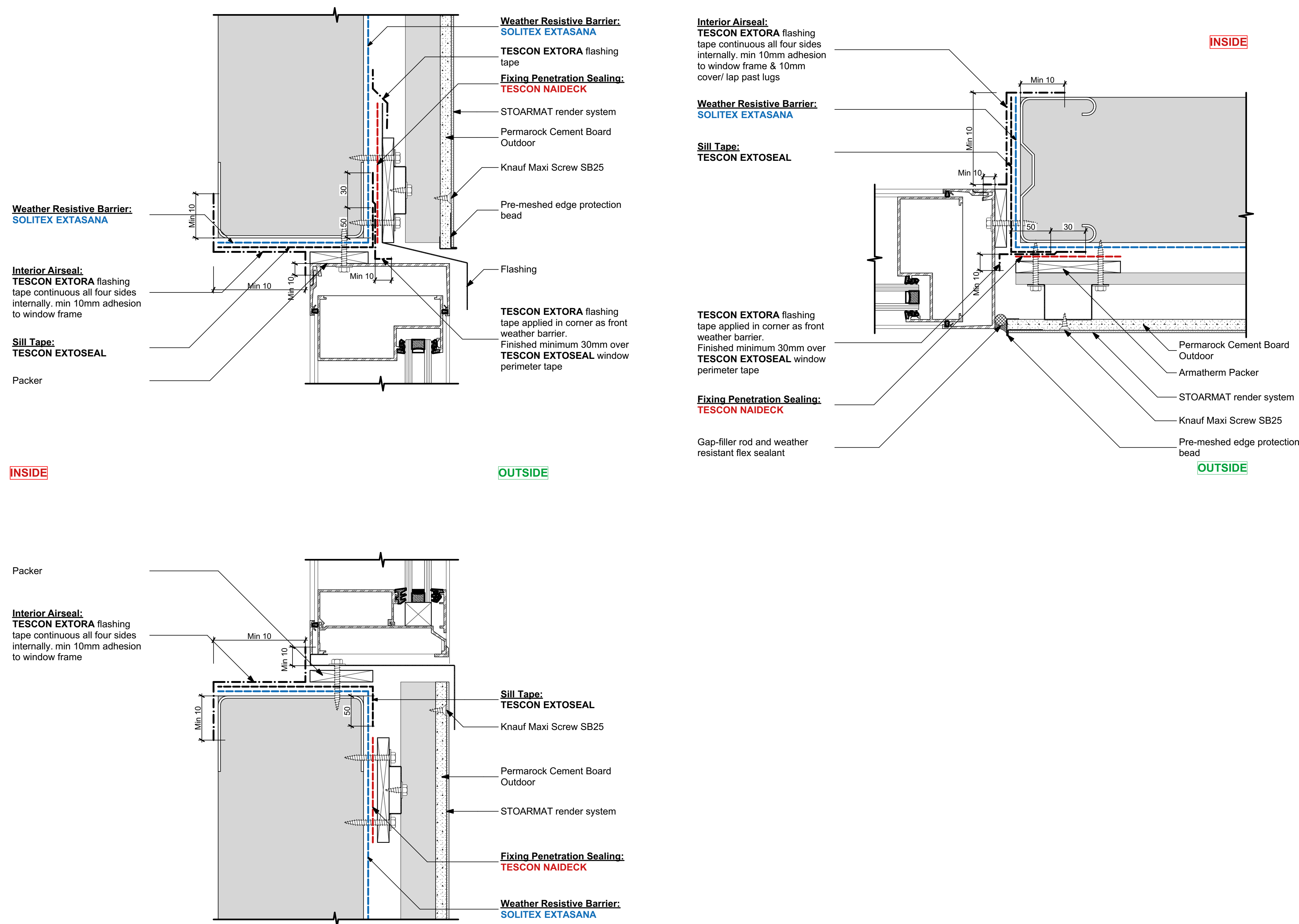
Issued: 21/04/2025 Revision: A Scale: 1:2 @ A1

© This drawing is the property of Pro Clima NZ Ltd &/or Pro Clima Australia Pty Ltd and must not be copied without permission. This drawing is a guideline to provide typical Pro Clima system detailing for AS/NZS 4284 prototype testing only and subject to change without notice. For application to specific projects, thermal and hygrothermal performance should match specific design, materials and climate requirements. These can be confirmed by hygrothermal analysis using software e.g. WUFI®.

Structural, fire and acoustic engineering design and the incorporation of building services (plumbing and electrical) should be signed-off by a suitably qualified engineer to ensure compliance with all health and safety requirements.

# ES4241 Commercial Flush Aluminium Window on Metal Structure

## Weathertight Window Connection - TESCON EXTORA® Back Seal



Details derived from:  
Test Report No. 2024-042-S1-Ncc2022  
Knauf Permarock Outdoor Facade  
AS/NZS4284:2008 Testing of Facades  
Nominated SLS ± 2.00kPa.



www.proclima.co.nz  
www.proclima.com.au

Issued: 21/04/2025 Revision: A Scale: 1:2 @ A1

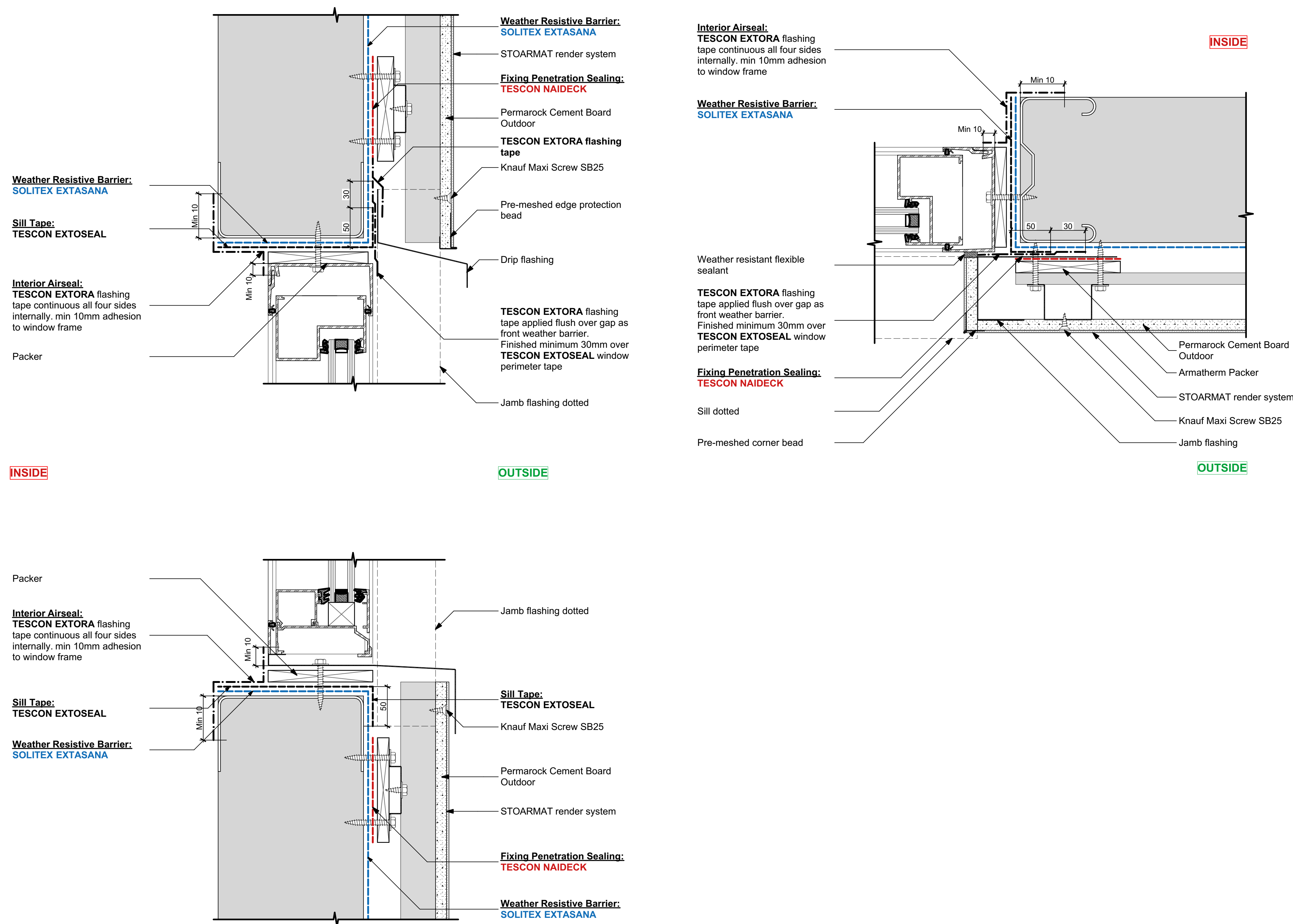
© This drawing is the property of Pro Clima NZ Ltd &/or Pro Clima Australia Pty Ltd and must not be copied without permission. This drawing is a guideline to provide typical Pro Clima system detailing for AS/NZS 4284 prototype testing only and subject to change without notice. For application to specific projects, thermal and hygrothermal performance should match specific design, materials and climate requirements. These can be confirmed by hygrothermal analysis using software e.g. WUFI®.

Structural, fire and acoustic engineering design and the incorporation of building services (plumbing and electrical) should be signed-off by a suitably qualified engineer to ensure compliance with all health and safety requirements.



# ES4242 Commercial Recessed Aluminium Window on Metal Structure

## Weathertight Window Connection - TESCON EXTORA® Back Seal



Details derived from:  
Test Report No. 2024-042-S1-Ncc2022  
Knauf Permarock Outdoor Facade  
AS/NZS4284:2008 Testing of Facades  
Nominated SLS ± 2.00kPa.



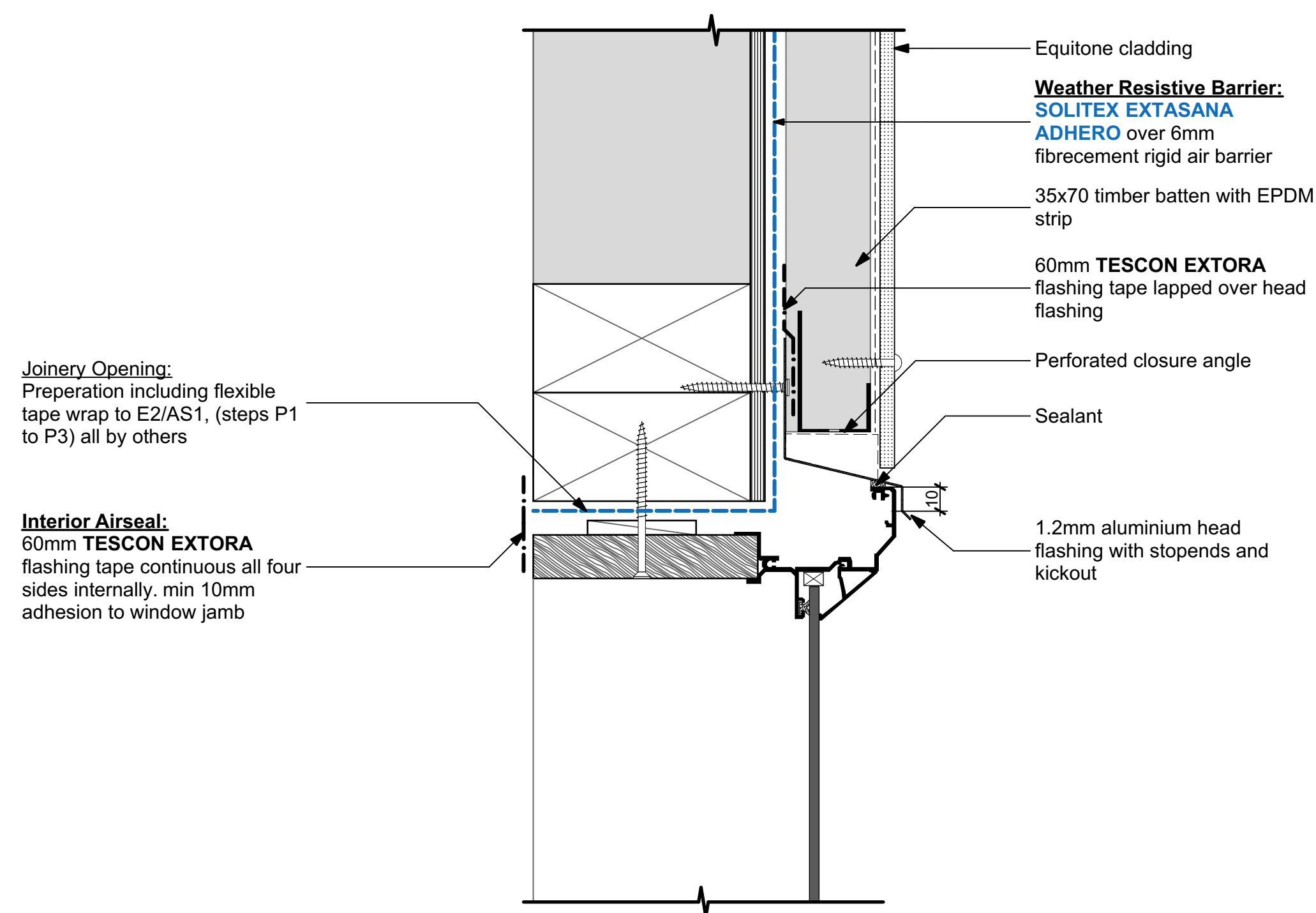
www.proclima.co.nz  
www.proclima.com.au

Issued: 21/04/2025 Revision: A Scale: 1:2 @ A1

© This drawing is the property of Pro Clima NZ Ltd &/or Pro Clima Australia Pty Ltd and must not be copied without permission. This drawing is a guideline to provide typical Pro Clima system detailing for AS/NZS 4284 prototype testing only and subject to change without notice. For application to specific projects, thermal and hygrothermal performance should match specific design, materials and climate requirements. These can be confirmed by hygrothermal analysis using software e.g. WUFI®. Structural, fire and acoustic engineering design and the incorporation of building services (plumbing and electrical) should be signed-off by a suitably qualified engineer to ensure compliance with all health and safety requirements.

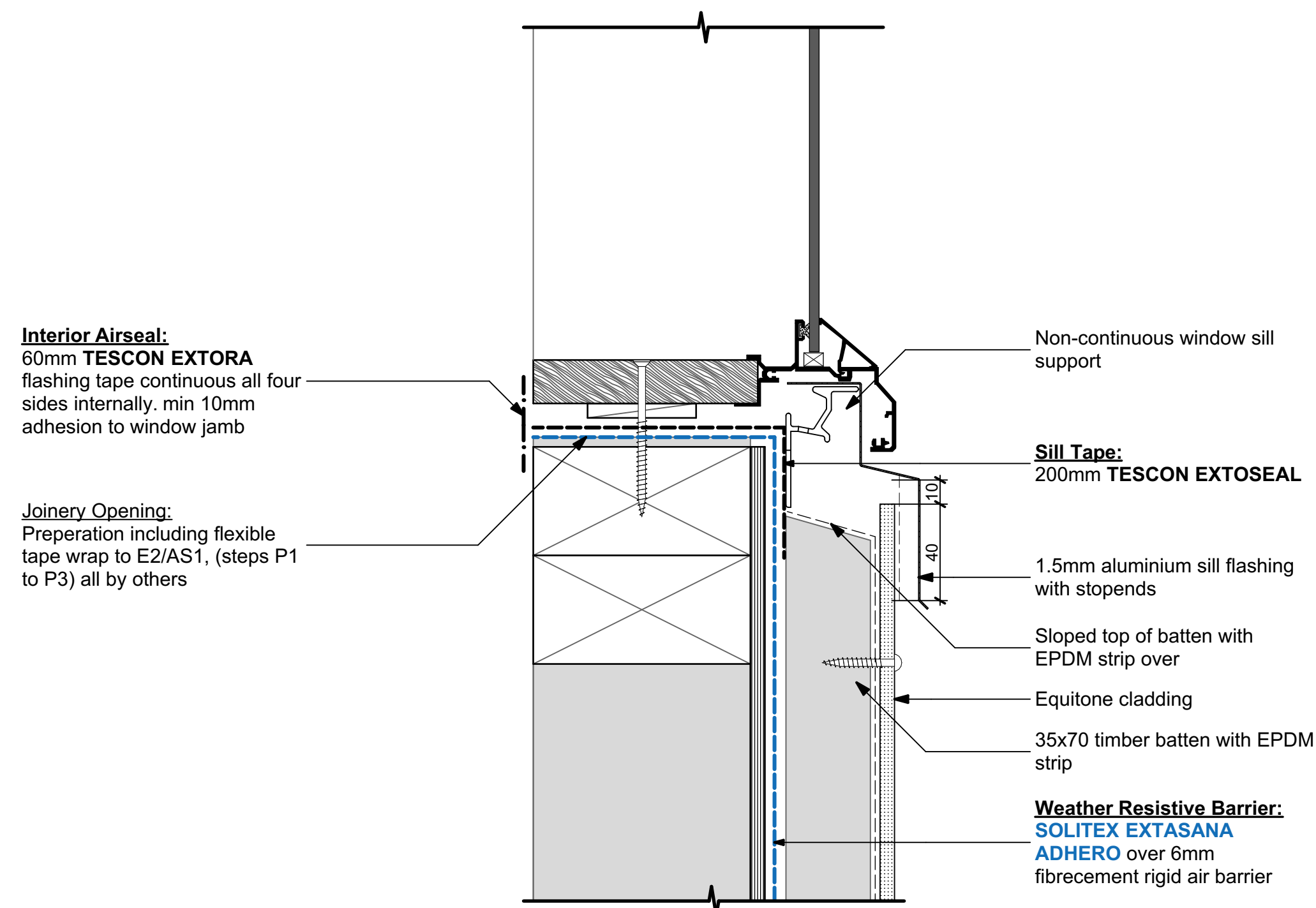
# ES4243 Residential Flush Aluminium Window on Timber Structure

## Weathertight Window Connection - TESCON EXTORA® Back Seal



INSIDE

OUTSIDE



Jointery Opening:  
Preparation including flexible tape wrap to E2/AS1, (steps P1 to P3) all by others

**Sill Tape:**  
200mm TESCON EXTONSEAL

OPTION 01

Outline of sill flashing

Outline of head flashing

100x0.9mm aluminium jamb flashing with kickout

Sealant over bond breaker tape

INSIDE

**Interior Airseal:**  
60mm TESCON EXTORA flashing tape continuous all four sides internally. min 10mm adhesion to window jamb

**Weather Resistive Barrier:**  
SOLITEX EXTASANA ADHERO over 6mm fibre cement rigid air barrier

35x70 timber batten with EPDM strip

Equitone cladding

OUTSIDE

Jointery Opening:  
Preparation including flexible tape wrap to E2/AS1, (steps P1 to P3) all by others

**Sill Tape:**  
200mm TESCON EXTONSEAL

OPTION 02

Outline of sill flashing

Outline of head flashing

Expandable foam between jamb flashing and window frame

100x0.9mm aluminium jamb flashing with kickout

INSIDE

**Interior Airseal:**  
60mm TESCON EXTORA flashing tape continuous all four sides internally. min 10mm adhesion to window jamb

**Weather Resistive Barrier:**  
SOLITEX EXTASANA ADHERO over 6mm fibre cement rigid air barrier

35x70 timber batten with EPDM strip

Equitone cladding

OUTSIDE

**Details derived from:**  
Test Report No. FT-R1040

E2/VM2 testing of cladding system installation details for 8mm Equitone® on 35 x 70 H3.1 SG6 KD timber cavity battens for Etex Group®

Nominated SLS ± 2.25kPa.



www.proclima.co.nz  
www.proclima.com.au

Issued: 21/04/2025 Revision: A

Scale: 1:2 @ A1

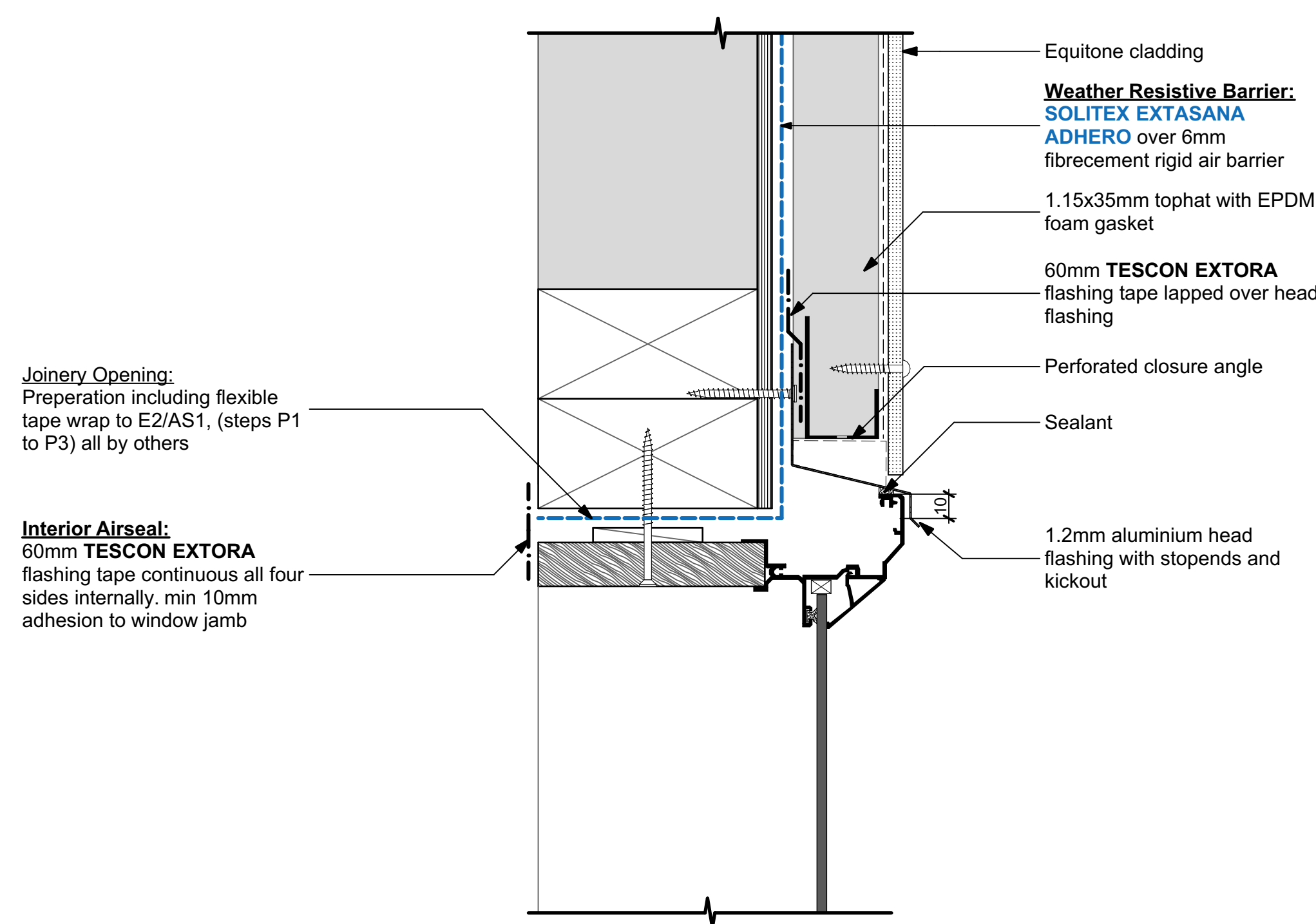
© This drawing is the property of Pro Clima NZ Ltd &/or Pro Clima Australia Pty Ltd and must not be copied without permission. This drawing is a guideline to provide typical Pro Clima system detailing for AS/NZS 4284 prototype testing only and subject to change without notice. For application to specific projects, thermal and hygrothermal performance should match specific design, materials and climate requirements. These can be confirmed by hygrothermal analysis using software e.g. WUFI®.

Structural, fire and acoustic engineering design and the incorporation of building services (plumbing and electrical) should be signed-off by a suitably qualified engineer to ensure compliance with all health and safety requirements.



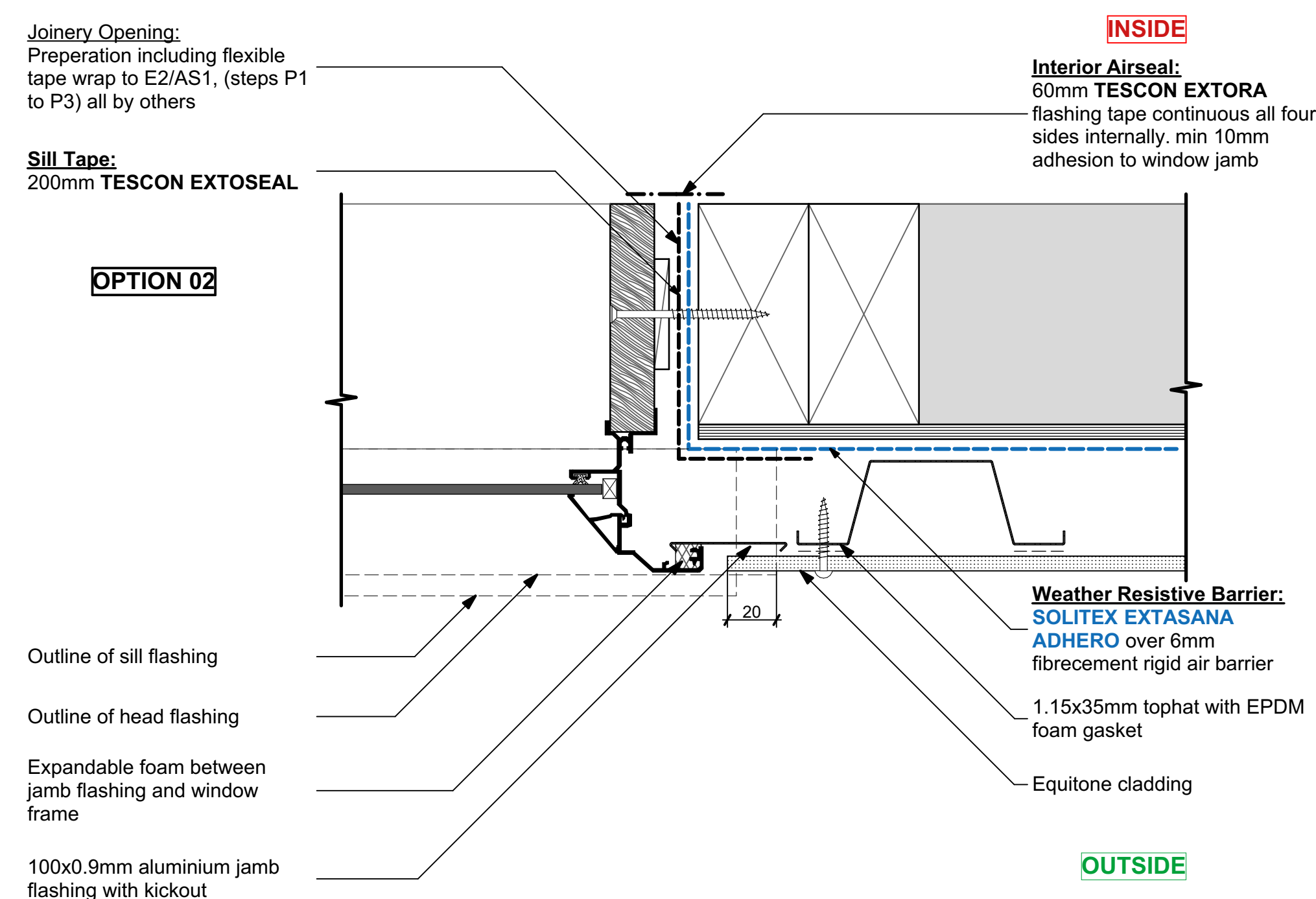
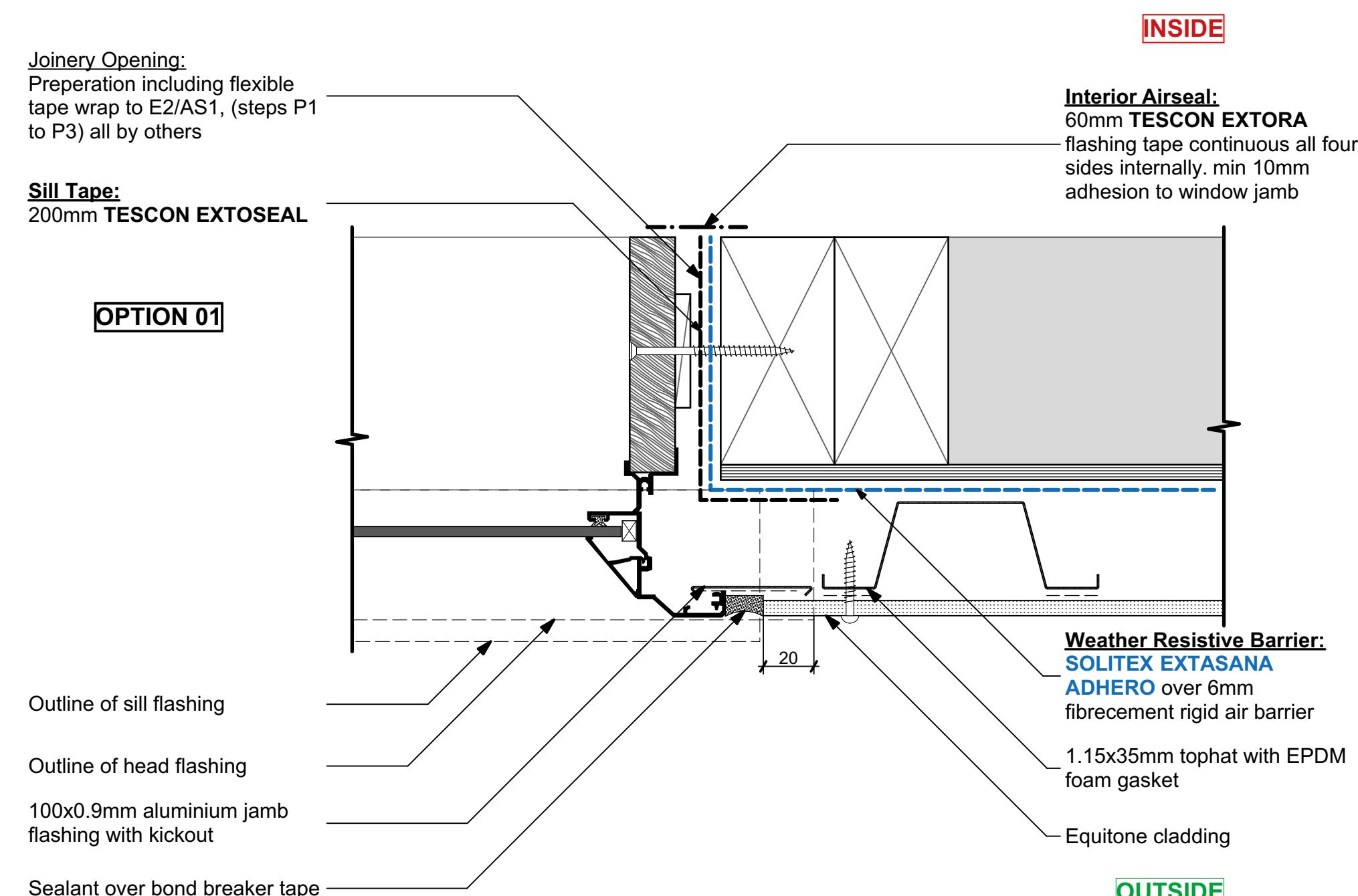
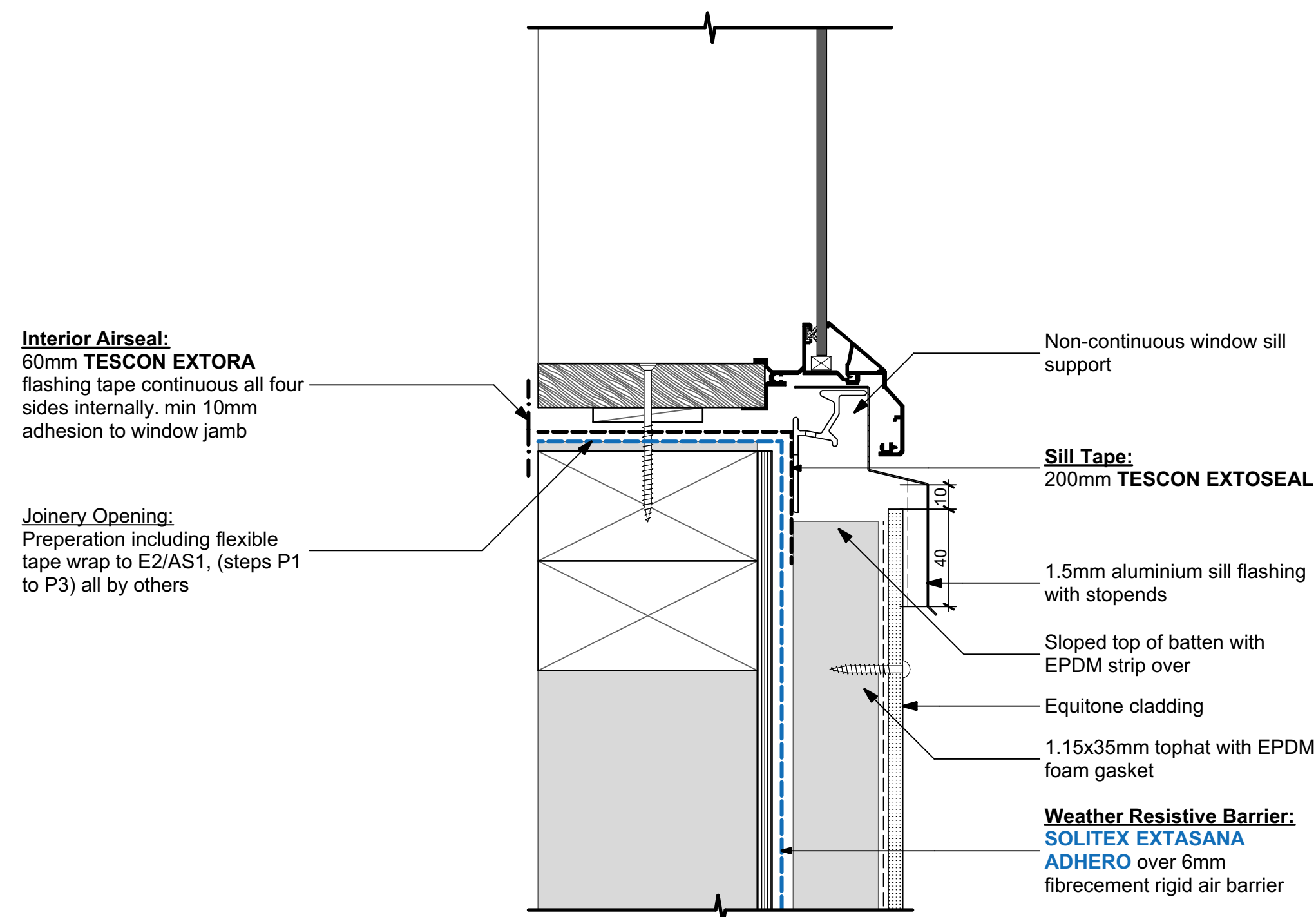
# ES4244 Residential Flush Aluminium Window on Timber Structure

## Weathertight Window Connection - TESCON EXTORA® Back Seal



INSIDE

OUTSIDE



**Details derived from:**  
E2/VM2 testing of cladding system installation details for 8mm Equitone on 35 mm x 1.15 BMT Zincalume Tophat cavity battens for Etex Group

Test Report No. FT-R1042

Nominated SLS  $\pm 2.25$ kPa.



www.proclima.co.nz  
www.proclima.com.au

Issued: 21/04/2025 Revision: A

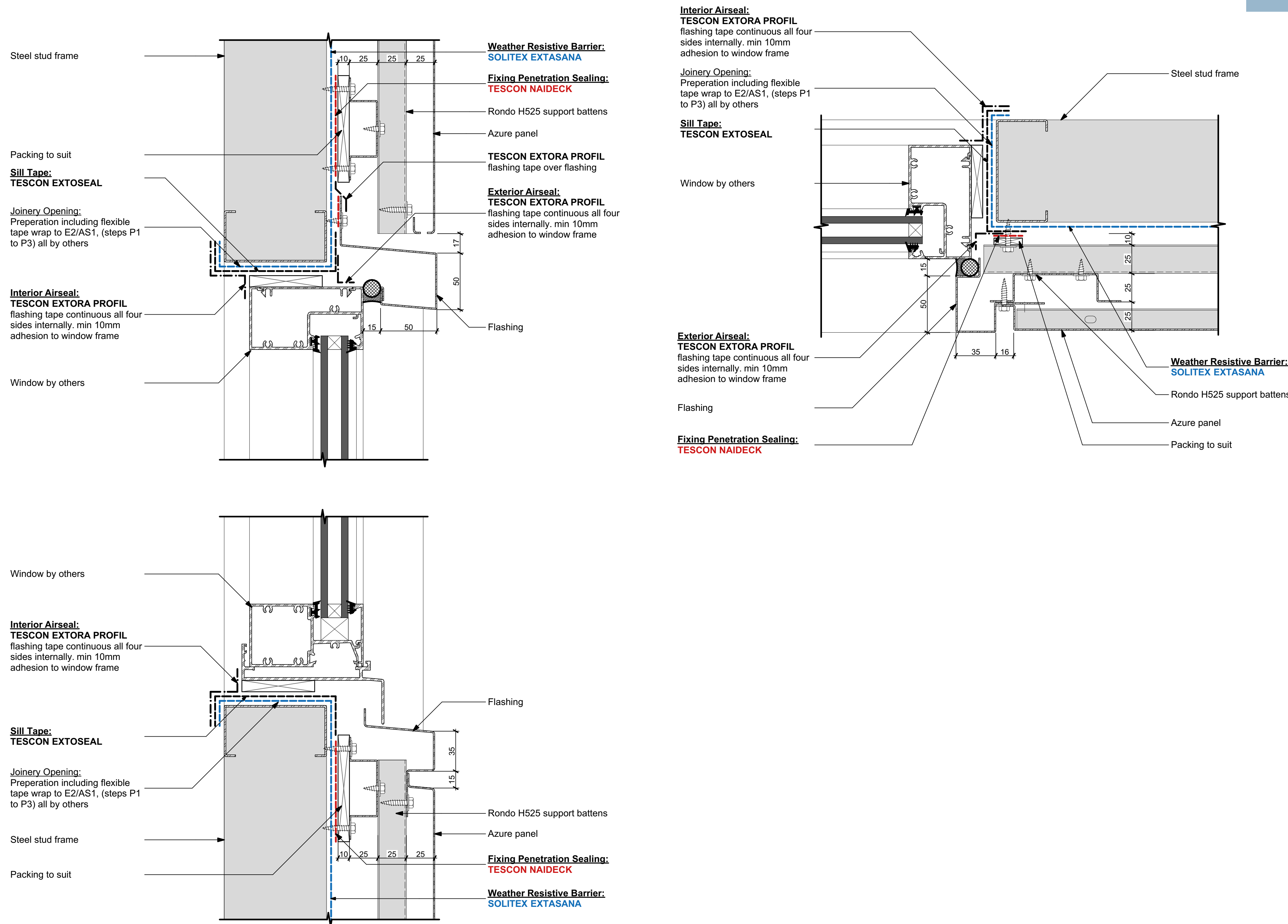
Scale: 1:2 @ A1

© This drawing is the property of Pro Clima NZ Ltd &/or Pro Clima Australia Pty Ltd and must not be copied without permission. This drawing is a guideline to provide typical Pro Clima system detailing for AS/NZS 4284 prototype testing only and subject to change without notice. For application to specific projects, thermal and hygrothermal performance should match specific design, materials and climate requirements. These can be confirmed by hygrothermal analysis using software e.g. WUFI®.

Structural, fire and acoustic engineering design and the incorporation of building services (plumbing and electrical) should be signed-off by a suitably qualified engineer to ensure compliance with all health and safety requirements.

# ES4245 Commercial Recessed Aluminium Window on Metal Structure

## Weathertight Window Connection - TESCON EXTORA® Back Seal



**Details derived from:**  
Lysaght AZURE © 100 Panel with Pro Clima SOLITEX EXTASANA © Weather Resistive Barrier

Test Report No. 2024-003-S1-R1

Nominated SLS ± 1.63kPa



www.proclima.co.nz  
www.proclima.com.au

Issued: 21/04/2025 Revision: A Scale: 1:2 @ A1

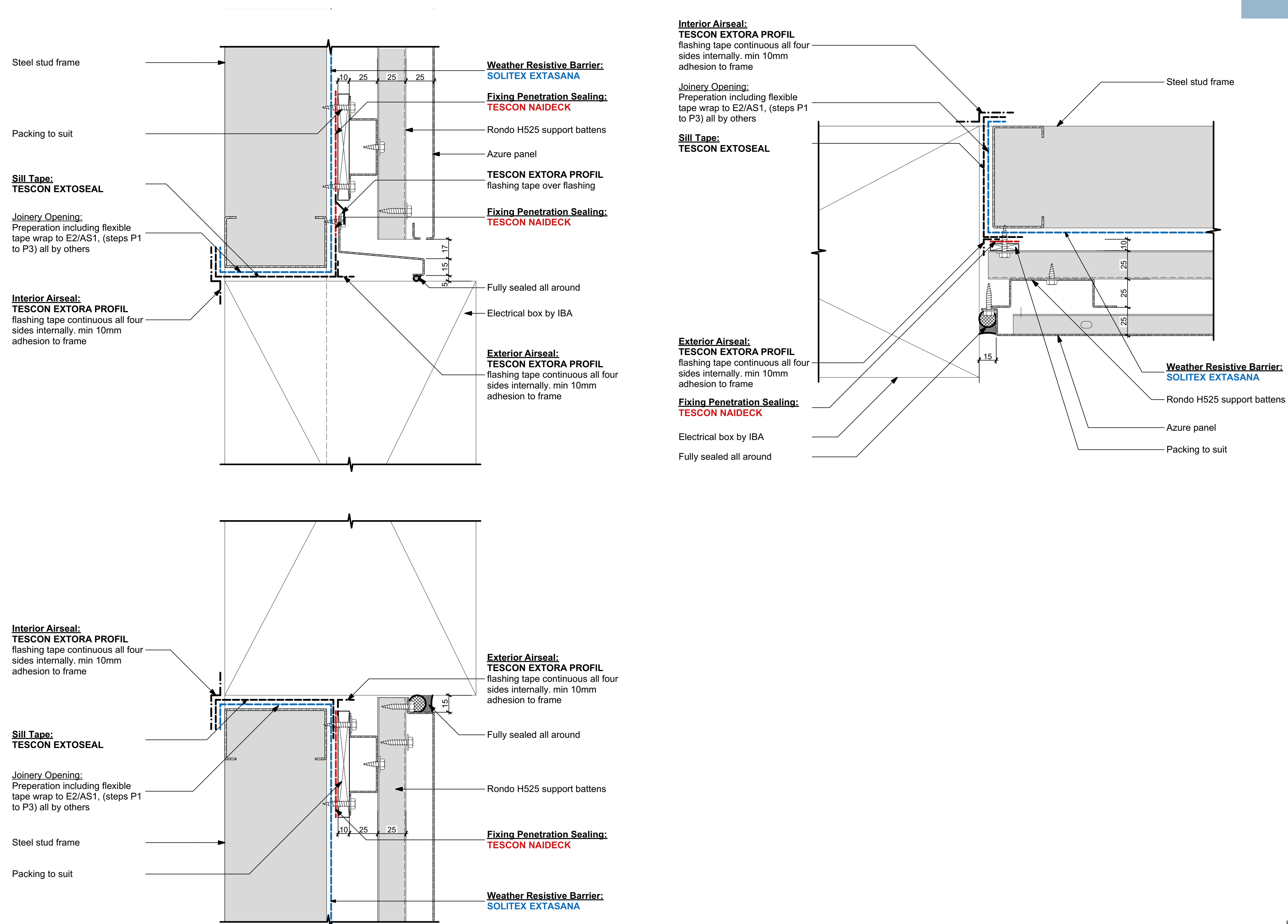
© This drawing is the property of Pro Clima NZ Ltd &/or Pro Clima Australia Pty Ltd and must not be copied without permission. This drawing is a guideline to provide typical Pro Clima system detailing for AS/NZS 4284 prototype testing only and subject to change without notice. For application to specific projects, thermal and hygrothermal performance should match specific design, materials and climate requirements. These can be confirmed by hygrothermal analysis using software e.g. WUFI®.

Structural, fire and acoustic engineering design and the incorporation of building services (plumbing and electrical) should be signed-off by a suitably qualified engineer to ensure compliance with all health and safety requirements.



# ES4541 Service Box on Metal Structure

## Weathertight Window Connection - TESCON EXTORA® Back Seal



**Details derived from:**  
Lysaght AZURE® 100 Panel with Pro Clima SOLITEX  
EXTASANA® Weather Resistive Barrier

Test Report No. 2024-003-S1-R1

Nominated SLS  $\pm 1.63\text{kPa}$



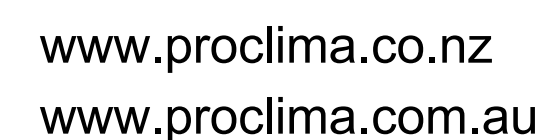
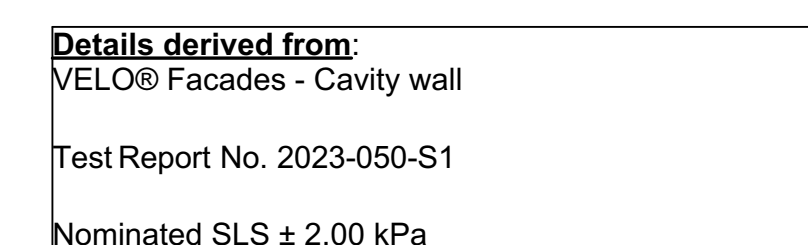
www.proclima.co.nz  
www.proclima.com.au

**Issued: 21/04/2025    Revision: A                      Scale:            1:2 @ A1**

© This drawing is the property of Pro Clima NZ Ltd &/or Pro Clima Australia Pty Ltd and must not be copied without permission. This drawing is a guideline to provide typical Pro Clima system detailing for AS/NZS 4284 prototype testing only and subject to change without notice. For application to specific projects, thermal and hygrothermal performance should match specific design, materials and climate requirements. These can be confirmed by hygrothermal analysis using software e.g. WUFI®.

Structural, fire and acoustic engineering design and the incorporation of building services (plumbing and electrical) should be signed-off by a suitably qualified engineer to ensure compliance with all health and safety requirements.

## Weathertight Window Connection - TESCON EXTORA® Back Seal



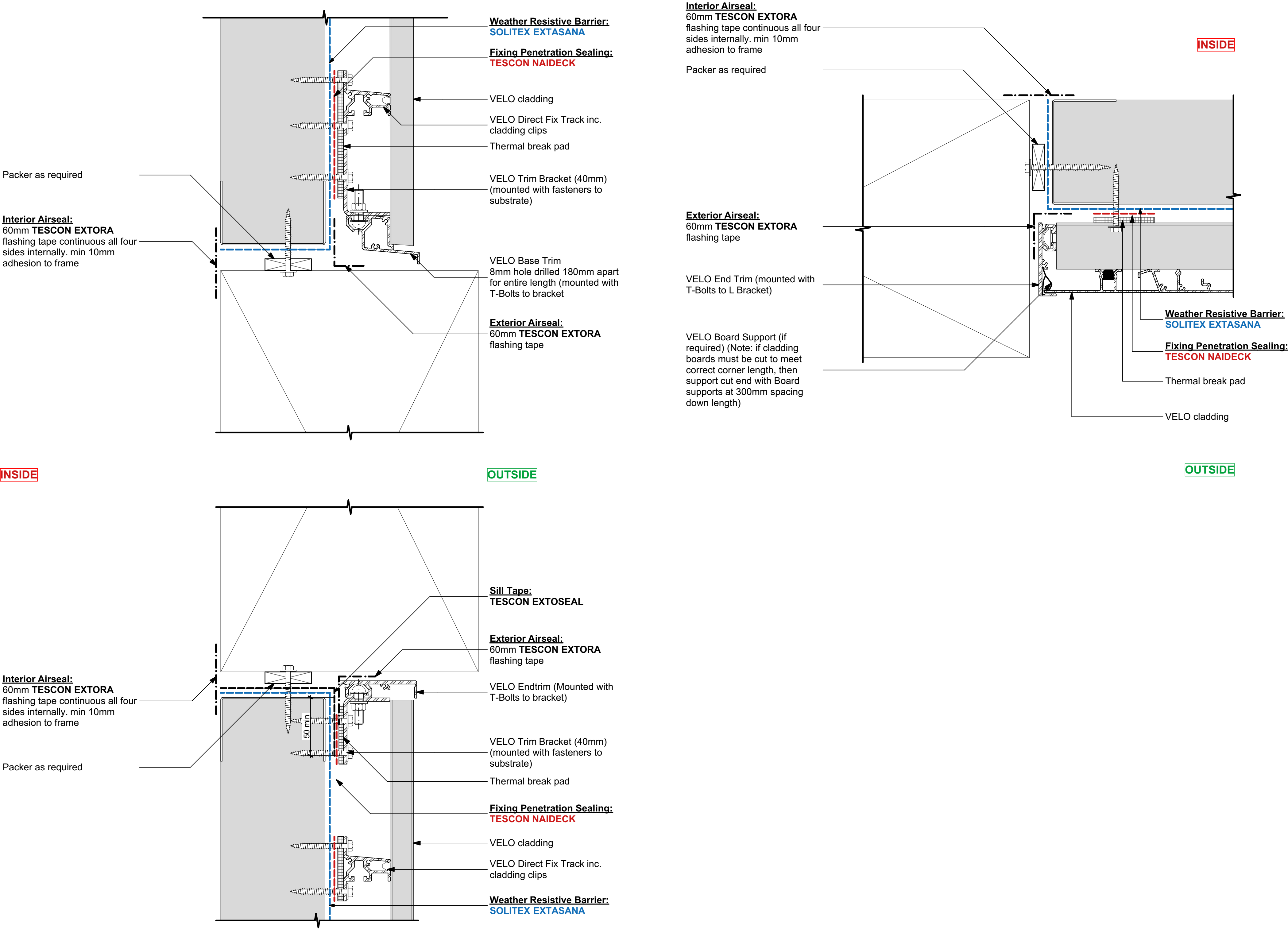
© This drawing is the property of Pro Clima NZ Ltd &/or Pro Clima Australia Pty Ltd and must not be copied without permission. This drawing is a guideline to provide typical Pro Clima system detailing for AS/NZS 4284 prototype testing only and subject to change without notice. For application to specific projects, thermal and hygrothermal performance should match specific design, materials and climate requirements. These can be confirmed by hygrothermal analysis using software e.g. WUFI®.

Structural, fire and acoustic engineering design and the incorporation of building services (plumbing and electrical) should be signed-off by a suitably qualified engineer to ensure compliance with all health and safety requirements.



# ES4252 Service Box on Metal Structure

## Weathertight Window Connection - TESCON EXTORA® Back Seal



Details derived from:  
VELO® Facades - Cavity wall  
Test Report No. 2023-050-S1  
Nominated SLS ± 2.00 kPa

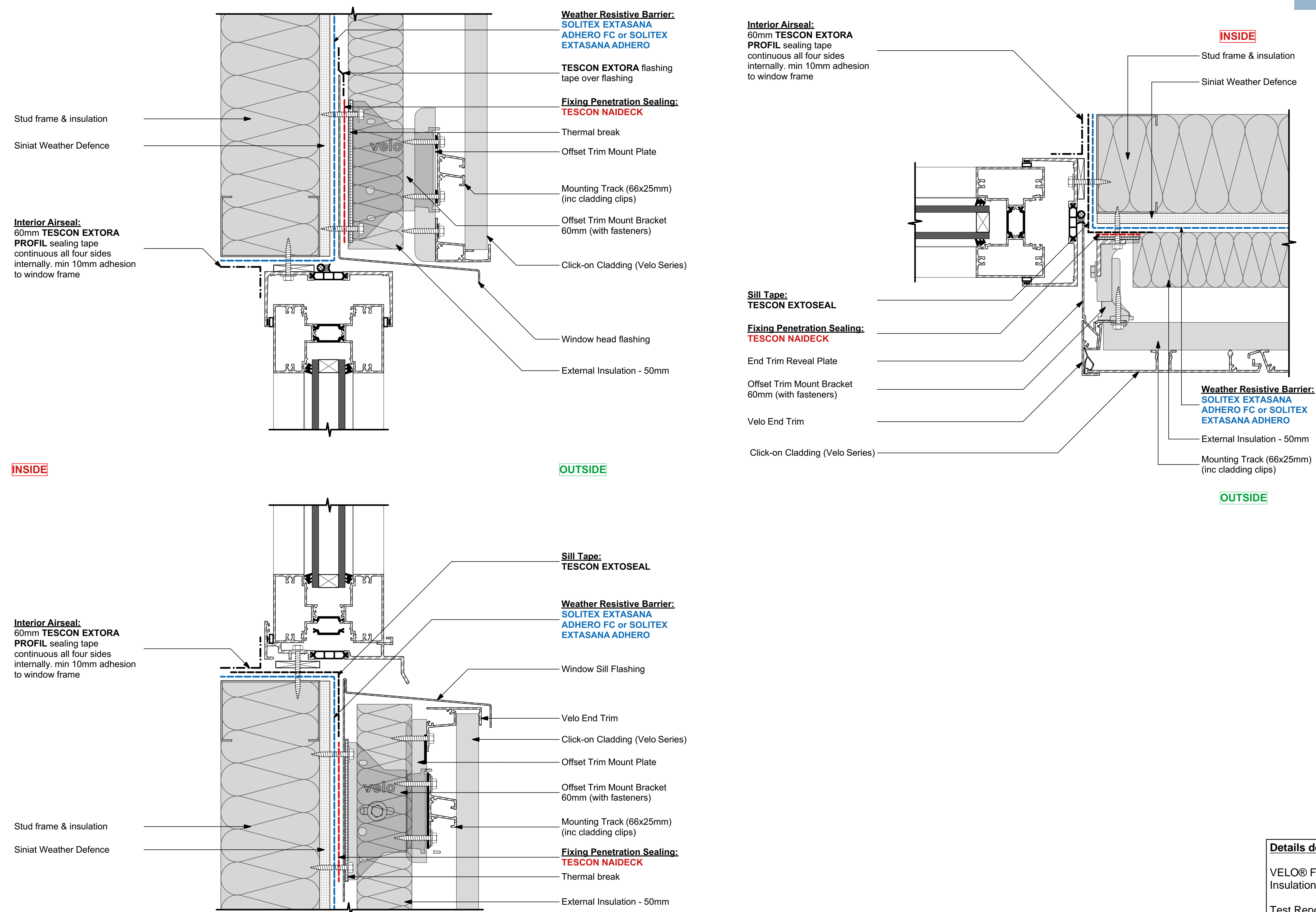


www.proclima.co.nz  
www.proclima.com.au

Issued: 21/04/2025 Revision: A Scale: 1:2 @ A1

© This drawing is the property of Pro Clima NZ Ltd &/or Pro Clima Australia Pty Ltd and must not be copied without permission. This drawing is a guideline to provide typical Pro Clima system detailing for AS/NZS 4284 prototype testing only and subject to change without notice. For application to specific projects, thermal and hygrothermal performance should match specific design, materials and climate requirements. These can be confirmed by hygrothermal analysis using software e.g. WUFI®. Structural, fire and acoustic engineering design and the incorporation of building services (plumbing and electrical) should be signed-off by a suitably qualified engineer to ensure compliance with all health and safety requirements.

## Weathertight Window Connection - TESCON EXTORA® Back Seal

**Details derived from:**

VELO® Facades - Aluminium Cladding with External Insulation, Rigid Air Barrier and Seismic joint

Test Report No. 2024-043-S1-AS4284-R1

Nominated SLS  $\pm 3.5$  kPa  
Nominated Seismic Displacement  $\pm 21$ mm



www.proclima.co.nz  
www.proclima.com.au

**Issued: 21/04/2025    Revision: A                    Scale:            1:2 @ A1**

© This drawing is the property of Pro Clima NZ Ltd &/or Pro Clima Australia Pty Ltd and must not be copied without permission. This drawing is a guideline to provide typical Pro Clima system detailing for AS/NZS 4284 prototype testing only and subject to change without notice. For application to specific projects, thermal and hygrothermal performance should match specific design, materials and climate requirements. These can be confirmed by hygrothermal analysis using software e.g. WUFI®.

Structural, fire and acoustic engineering design and the incorporation of building services (plumbing and electrical) should be signed-off by a suitably qualified engineer to ensure compliance with all health and safety requirements.