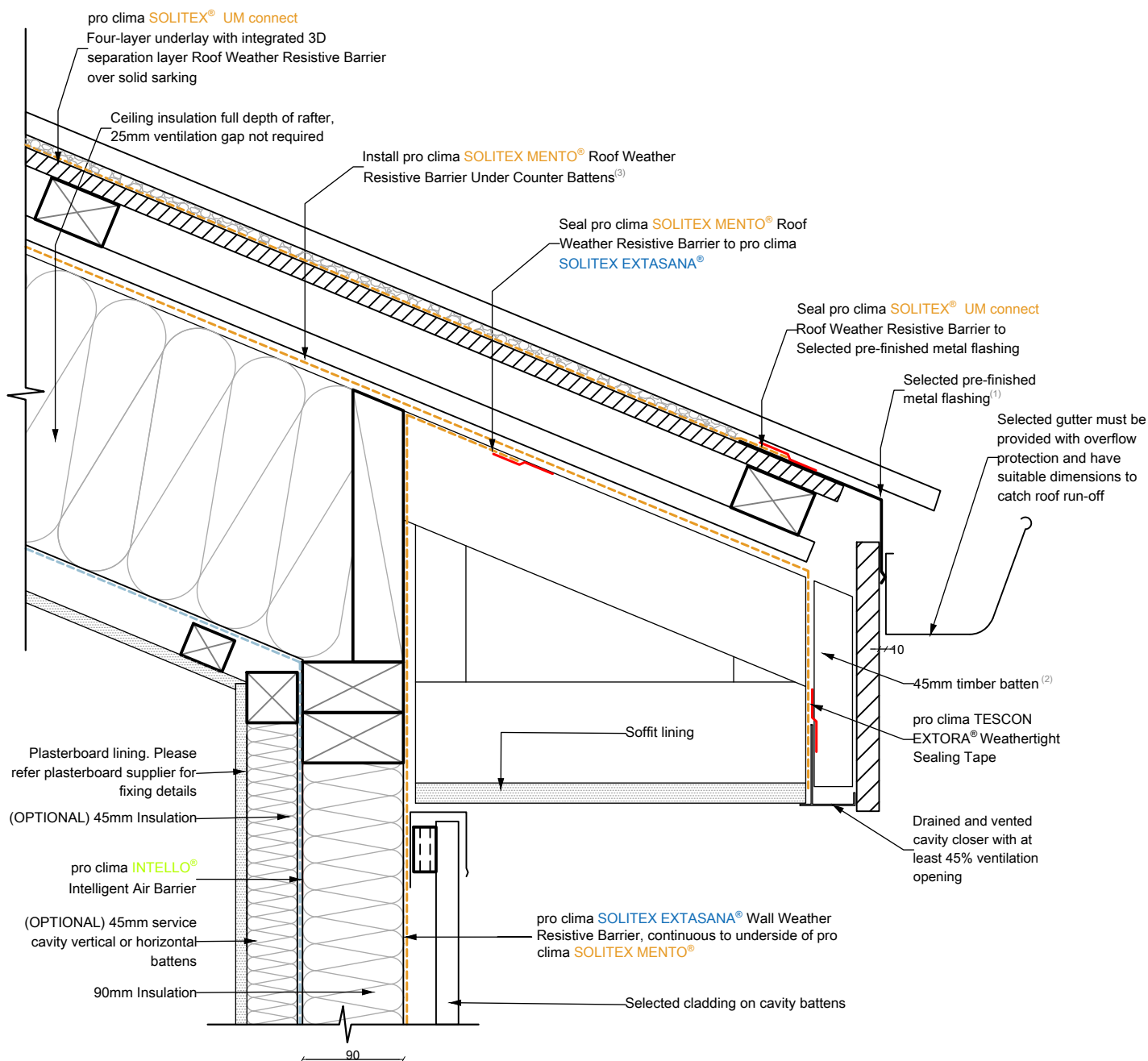


# W-1133-1 SOLITEX® UM ON ABOVE SHEATHING VENTILATION



## NOTES:

- 1: Additional ventilation can be achieved to increase the purge rate of heat in summer by utilising a perforated flashing at the eave.
- 2: Normal Ventilation: Timber packer should be 45mm in combination with at least 45% open area cavity closer.
- Strong Ventilation: Timber packer should be 90mm in combination with at least 45% open area cavity closer.
- 3: A minimum 20mm counter batten will achieve 200cm<sup>2</sup>/m cross-sectional flow area.

Alternatively: SOLITEX EXTASANA ADHERO® or SOLITEX MENTO® can be used in conjunction with the 3D separation mesh.

The depth of the cavity can be reduced for cavity closers with higher open area ratios.

$$\text{Ventilation} = (\text{Packer}) \times (\text{Open Area Ratio})$$

$$\text{Normal Ventilation} \geq 200\text{cm}^2/\text{m}$$



pro clima®  
www.proclima.co.nz  
www.proclima.com.au

Title: SOLITEX® UM on ASV

ID: W-1133-1

Issued: 20/04/2022

Revision: b

© This drawing is the property of Pro Clima NZ Ltd &/or Pro Clima Australia Pty Ltd and must not be copied without permission. This drawing is a guideline only and subject to change without notice. Thermal and hygrothermal performance should match specific design, materials and climate requirements. These can be confirmed by hygrothermal analysis using software e.g. WUFI®. Structural, fire and acoustic engineering design and the incorporation of building services (plumbing and electrical) should be signed-off by a suitably qualified engineer to ensure compliance with all health and safety requirements.