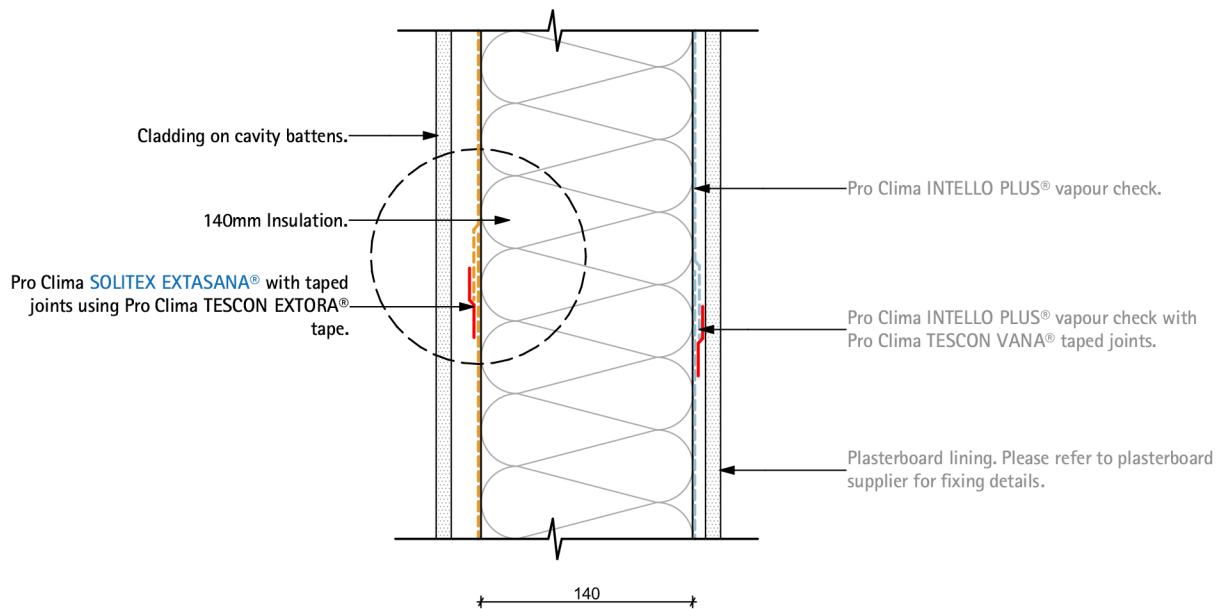
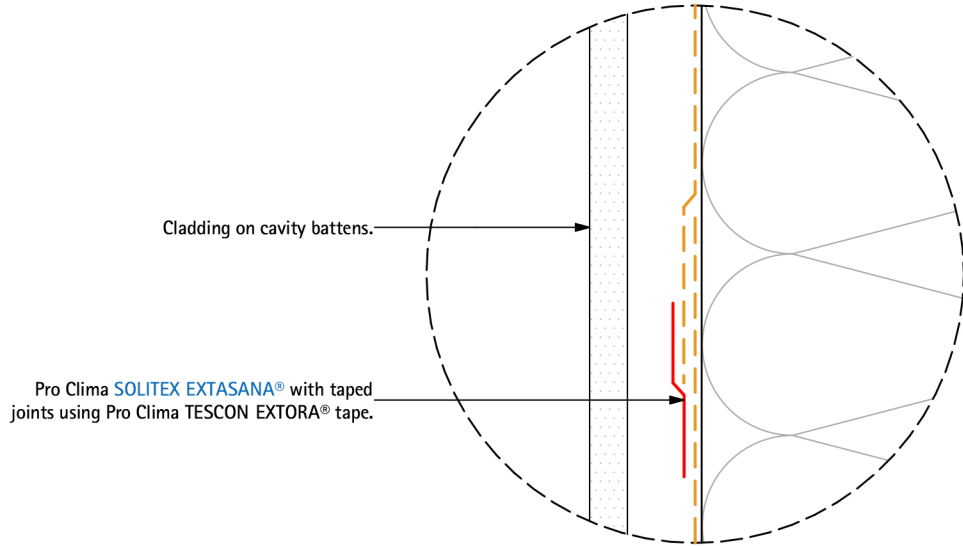


W3112 Pro Clima Wall Timber Framing Detail

Typical vertical 140mm wall section, direct fixing



Title: Wall Timber Framing Detail

ID: W3112

Issued: 06/03/2019

Revision: D

www.proclima.co.nz
www.proclima.com.au

© This drawing is the property of Pro Clima NZ Ltd &/or Pro Clima Australia Pty Ltd and must not be copied without permission. This drawing is a guideline only and subject to change without notice. Thermal and hygrothermal performance should match specific design, materials and climate requirements. These can be confirmed by hygrothermal analysis using software e.g. WUFI®. Structural, fire and acoustic engineering design and the incorporation of building services (plumbing and electrical) should be signed-off by a suitably qualified engineer to ensure compliance with all health and safety requirements.