



# Installation Guide

pro clima **TESCON ADHISO WS** Pure Aluminium tape for wet seal connections



## WHAT FOR?

- ✓ Wet seal connection between sill tape and joinery

## APPLIED TO?

- ✓ SOLITEX EXTASANA®
- ✓ SOLITEX MENTO®
- ✓ TESCO EXTONSEAL®
- ✓ TESCO EXTORA®
- ✓ Ecoply® Barrier Sill Tape
- ✓ Ecoply® Barrier Frame Sealing Tape

## ADVANTAGES

- ✓ Pure aluminium for wet seal adhesion
- ✓ Durable
- ✓ Thin
- ✓ Can be applied to cold surfaces



1

### Preparation

Ensure opening is dry and free of dirt, dust, oils and grease



2

### Installation of the tape

Install ADHISO WS in appropriate position around the full perimeter of the opening



3

### After joinery is installed

Apply PEF rod from the inside of the window to the full perimeter

internal

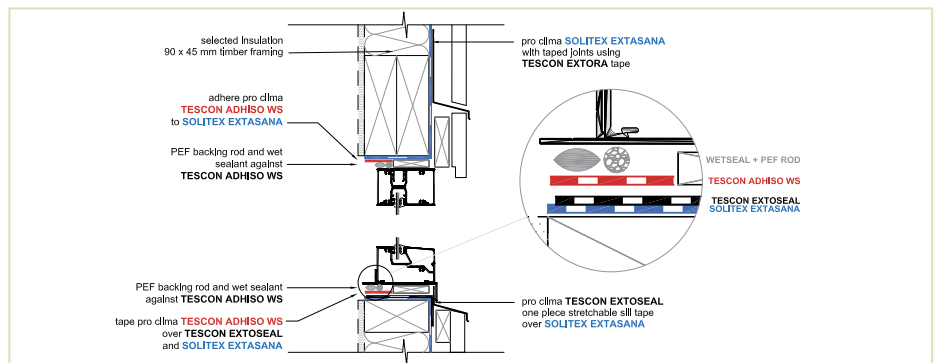


4

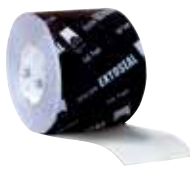
### Apply wet seal sealant

Apply to full perimeter of opening

internal



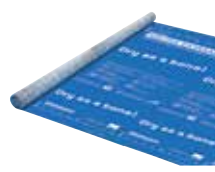
**TESCON ADHISO WS**  
Pure Aluminium tape for wet seal connections



**TESCON EXTONSEAL**  
Sill Tape



**TESCON EXTORA**  
Weathertight Sealing Tape



**SOLITEX EXTASANA**  
Wall Protection Membrane

If you have any questions please contact us:

**Pro Clima New Zealand Ltd**  
PO Box 925  
CBD  
Wellington 6140  
Phone: 0800 PRO CLIMA (0800 776 254)  
Email: welcome@proclima.co.nz

[www.proclima.co.nz](http://www.proclima.co.nz)

**Pro Clima Australia Pty Ltd**  
PO Box 924  
Gosford  
NSW 2250  
Phone: 1800 PRO CLIMA (1800 776 254)  
Email: welcome@proclima.com.au

[www.proclima.com.au](http://www.proclima.com.au)

**Note:** please contact pro clima for test documentation from wet sealant providers