



In Depth

pro clima technical articles

Why do adhesives stick?



Edition 1

Adhesive tapes: how do they work, what should they be able to do, and what can they do?

Adhesive tapes are used as bonding aids in a wide range of applications in the creation of airtight building envelopes. Several hundred metres of tape are often used on a single building! Adhesive tapes have become established as bonding agents for these applications (just as nails are the standard solution for timber structures). They have to fulfil their functions for a number of decades to ensure that the building in question fulfils the standards expected by the energy consultant and by the building client. This article provides an overview of adhesive technology and the key properties of adhesive tapes typically used in construction.



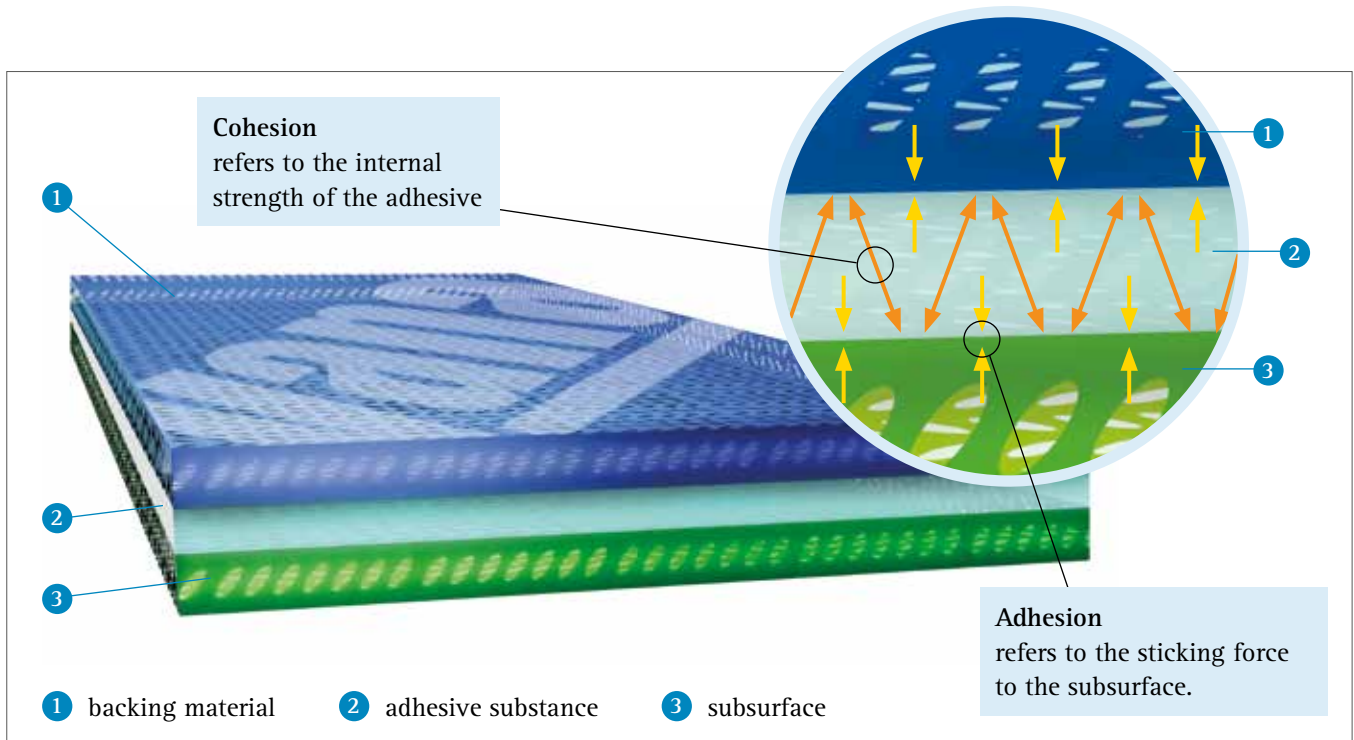
Considerable lengths of various adhesive tapes are used when sealing buildings. A carpenter can be seen here sticking the interior corners of a window when working on the interior of a fire station.

Aren't all adhesive tapes the same?

Adhesive tapes might appear similar or even identical at first glance: when you compare different products, they all have a backing material. Depending on the planned application for the adhesive tape in question, this backing material may consist of paper, plastic

film or fleece. An adhesive substance has been applied to the backing, and this adhesive substance is covered by a protective sheet or protective paper on the underside of the tape. The various types of backing facilitate different areas of application. For example, a tape that can be used both indoors and outdoors must have a UV-stabilised backing; an adhesive window-sealing tape must

have a fleece backing that can be plastered over. The difference is easy to recognise. However, if you consider the adhesive substance itself, the difference is not so easy to identify. A review of data sheets is often of little help in this regard, as they generally only specify limited technical data – and this data is also difficult to compare.



This illustration shows the various forces that act in an adhesive bonded joint. Cohesion refers to the internal strength of the adhesive. Adhesion refers to the sticking force to the subsurface. As a rule: the higher the adhesion, the lower the cohesion. An optimal balance between cohesion and adhesion is crucial for permanent adhesion. (See information box 1 with regard to adhesive tape tests on construction sites)

Adhesive tapes for the creation of airtightness are generally manufactured using two main production methods. The majority (around 80–85%) are produced as dispersion adhesives. In this process, acrylates dissolved in water are applied to the backing material in liquid state. Emulsifiers are added to the dispersion to ensure that the dispersion remains homogeneous and that the acrylates dissolve in water in the first place. The function of these emulsifiers is to attract water. The water is then evaporated in long drying tunnels later in the production process. The dissolved acrylates bond with one another, form long chains of molecules and become »sticky« as a result. The emulsifiers remain in the adhesive film, but no longer serve any purpose. A more exclusive group of adhesive tapes is manufactured using a solids-based adhesive containing pure acrylate. This production technology is relatively new and more laborious from an engineering viewpoint compared to the process used for adhesive tapes with acrylate dispersions. The adhesive is applied to the backing material in the form of

a viscous mass and the individual acrylate molecules are cross-linked by the controlled addition of energy in such a way that the desired adhesive properties are created.

Honey and stone, or adhesion and cohesion

Adhesion and cohesion can be demonstrated very well by comparing runny honey with a stone. Honey exhibits good

adhesion and sticks to surfaces very well as a result. However, its inner strength (cohesion) is so bad that it runs off in drops under the action of its own weight. A stone has high inner strength, i.e. cohesion, but very low adhesion. Good adhesion is generally associated with poor cohesion, and vice versa. A good adhesive tape results from an ideal balance between cohesion and adhesion.



Honey has high adhesion – it sticks immediately to every surface. However, its cohesion is low, which means that honey drops off the surface under the action of its own weight. Stone is the exact opposite: it has high inner strength, i.e. cohesion, but has no adhesion and therefore does not stick to surfaces.

Why do adhesives stick? Sloths, squirrels and geckos



Let us consider the interesting question of how and why an adhesive tape is able to stick things together. The bond with the substrate is achieved using various mechanisms. Sheeting or a pane of glass may appear smooth at first glance, but their surfaces actually look very different – with hills and valleys – when viewed under magnification. The adhesive flows around these structures and claws to the surface like a squirrel on a tree or grips the surface like a sloth wrapped around a branch.

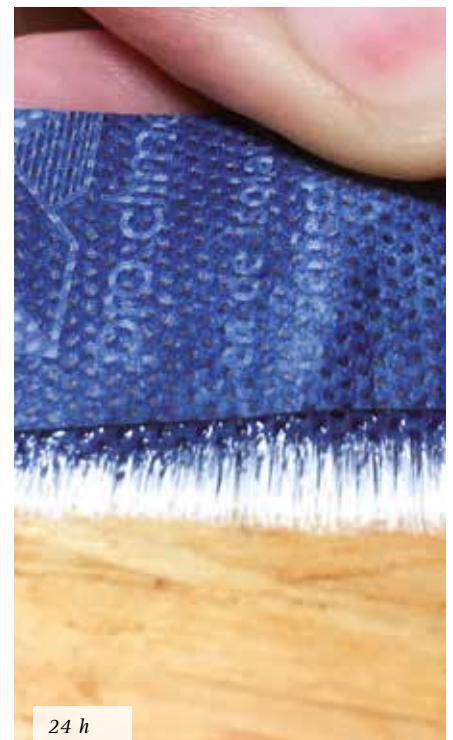
If the adhesive is in direct contact with the surface, attractive forces – so called Van der Waals forces – will result between the two elements at a molecular level. The closer the adhesive comes to the surface, the more these forces will come into play and increase the strength of adhesion to the substrate. A similar principle applies with the gecko, which is able to walk upside-down on smooth surfaces such as panes of glass. This is made possible by the large number of very fine setae (hairs) on the feet of geckos, which increase the contact surface and thus facilitate sufficiently strong adhesive forces.

Take your time: the build-up of adhesive force

It can take some time before an adhesive has flowed into a subsurface fully and established a strong bond with it. Adhesive strength is generally built up over a period of hours. The reason that all manufacturers recommend that their adhesive tapes should be pressed into place can be explained by the mechanisms described above: an adhesive must be brought into close contact with a subsurface to be able to flow around and surround it.



20 min



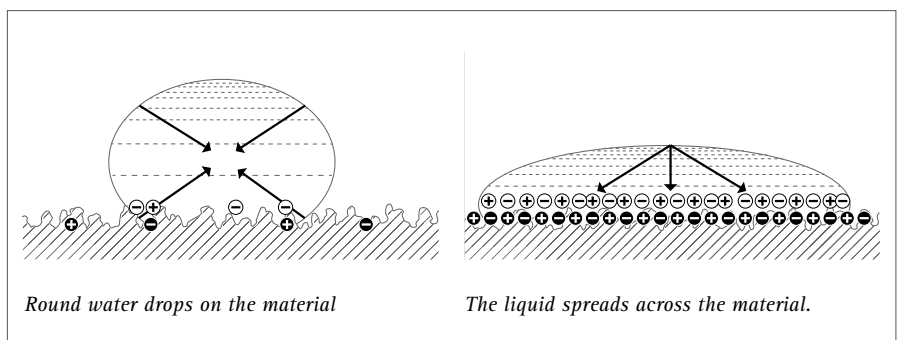
24 h

These photos show how strength builds up over the course of contact time. An adhesive tape was employed here that can be used for interior air sealing and exterior wind sealing. The initial adhesion – after 20 minutes – can be seen on the left; the significantly stronger adhesive bond after 24 hours can be seen on the right.

A drop of water brings clarity – The influence of surface tension

There is a commonly held myth that an adhesive should be able to stick to every surface. And if an adhesive bond doesn't hold as desired, then it's always the adhesive agent's fault! However, this assumption is false. Nobody would think of taking two pieces of firewood, applying wood glue to them, pressing them together briefly and then pulling

them apart again immediately, and then saying that the glue was responsible for the fact that the bond didn't hold. The quality of a given bond is always dependent on the bonding agent, the subsurface and the method of applying the bond. The release films used are evidence that not all membranes are suitable for adhesion: some adhesive tapes can be easily removed from their release films. On the other hand, there are films that tapes bond well



Surface tension of membranes: the low-energy surface has few attachment points and a low surface tension. It is not able to pull the water drop out of its shape. The more attachment points there are, the more energy the surface has and the more the water drop will be pulled out of its round shape as a result. High-energy surface: The liquid spreads across the material.

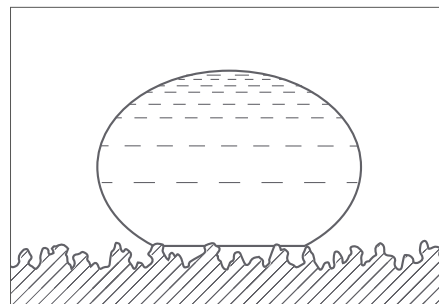
to, but which then become detached under tension. Finally, there are also films that adhesive tapes cannot be removed from at all. The surface tension of membranes is responsible for all of this. This tension describes how well a given membrane can be 'wetted' by an adhesive – in other words, how well the adhesive can get close to the surface of the membrane to be stuck. The surface tension of a membrane cannot be seen, and this value is specified in data sheets by a few limited number of manufacturers.

Water drop test

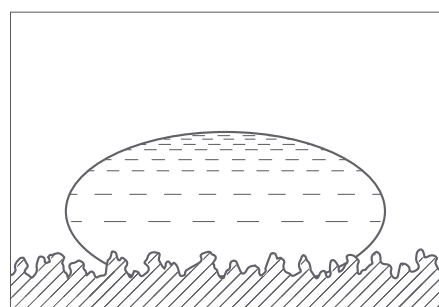
How can one estimate surface tension on a construction site? One possible method here is the water drop test: a

drop of water is placed on the surface of the membrane and it is observed how well the drop of water spontaneously wets the surface. The greater the surface tension (surface energy) of the membrane, the greater the likelihood that the water drop will be pulled out of its »drop« shape. This indicates a stronger and more reliable adhesive bonds with an airtight membrane. Of course, this test does not provide precise information, but it has proven useful in practice over a long period. Membranes with a surface tension of $> 40 \text{ N/mm}$ are recommended for permanent airtight adhesive bonds. Membranes with surface tensions significantly below this value are often used in building practice. In order to supply the market with adhesive tapes

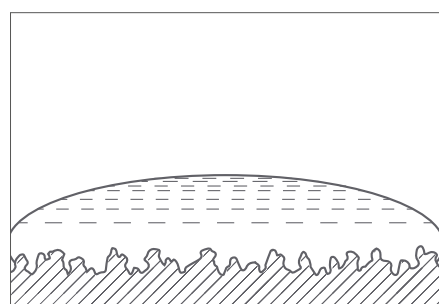
that can still stick to these lower quality surfaces, large quantities of resins are added to acrylate dispersion adhesive tapes, in particular. These resins stick aggressively to poor surfaces. However, the problem here is that resins can oxidise with oxygen, become brittle over their service lives and lose their adhesive strength. To prevent this happening, it is recommended to ensure that adhesive tapes that only contain pure acrylates are selected. As well as being used for adhesive bonds for membrane overlaps, acrylate adhesive tapes can also be used on joints to adjacent building components consisting of timber, stone, wood fibreboards, plaster and concrete. This is possible as long as the surface is generally even, free of dust and resistant to abrasion. If all three of these prerequisites are not fulfilled by a given surface, it can be pre-treated with a primer. Primers for acrylate tapes are applied in liquid form and differ from undercoats in terms of their mechanism. An under-coat penetrates deep into the surface and strengthens it. A primer for an acrylate adhesive tape is designed to penetrate into the subsurface and also to form a film on the surface that levels out any unevenness. These primers have proven themselves in practice. It is critical that the primer is suitable for the adhesive tape: i.e. one should always think in terms of overall systems.



Silicone paper: Surface tension: $< 30 \text{ N/mm}$. Very poor surface wetting. Very hard to stick for this reason.



Weak wetting and poor adhesive ability for this PE airtightness membrane: approx. 35 N/mm



Double-layered airtightness membrane: Very good wetting and good adhesive ability, as the surface tension is greater than 45 N/mm .

Resistance to moisture – why are there differences?

Nobody wants moisture on a building site, but regrettably the reality often very different! Adhesive tapes have to be able to reliably withstand the challenges of moisture after they are installed. The first protective layer is the backing material that is used. A film is clearly more resistant to water than paper. However, moisture does not always come only from the outside, but often from the subsurface too.

In this case, the advantage of the external protective effect of the film is reversed, as the moisture cannot escape through the film and builds up instead between the adhesive and the film. As already described, acrylate dispersion adhesives contain emulsifiers in their adhesive film after production. A characteristic of emulsifiers is that they store water, and they are still capable of doing this years later. If an acrylate dispersion adhesive comes into contact with water again, the adhesive re-emulsifies, often assumes a white colouring and can lose adhesive strength. Pure acrylates are fully water-resistant, as they do not react with water in this way, their adhesive strength is preserved.

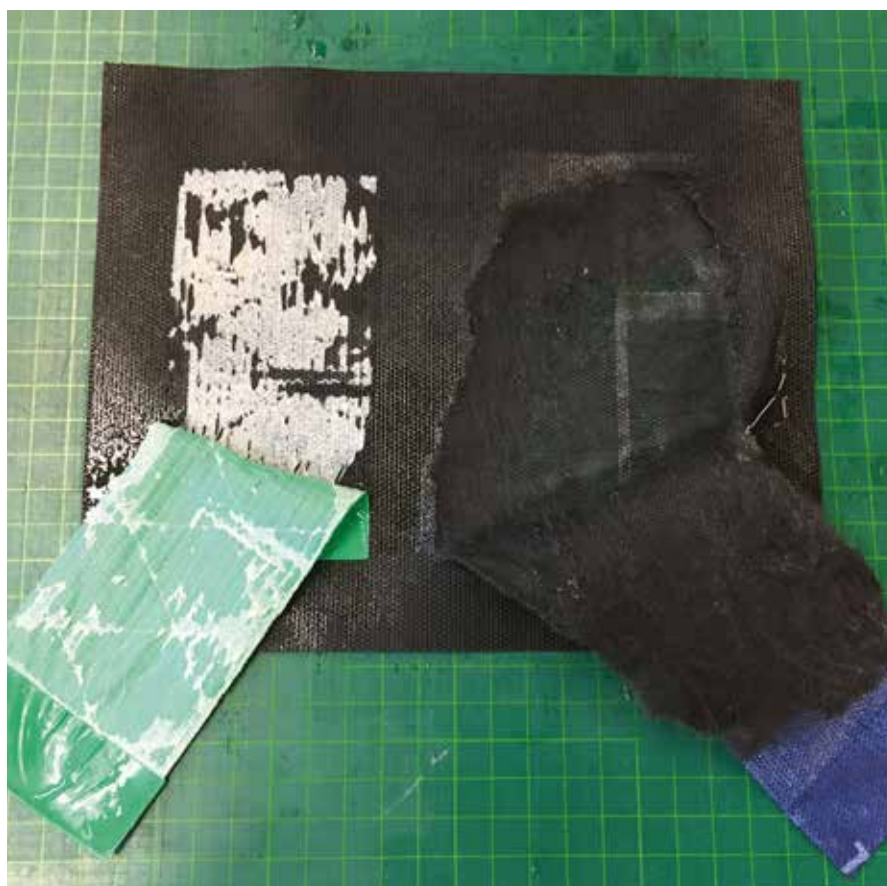
See yee, who join in endless union – Durability: experience and laboratory tests

Reference is often made to the positive experience observed over the last 20 years with regard to the durability of adhesive tapes. When we plan and build a house nowadays, clients expect the built structures and the materials used to have a service life of 50 years or longer. As a result, it is even more important when selecting adhesive tapes to take into account long experience in the marketplace alongside ageing tests that confirm high durability of bonding agents.

Consistent rules: standards for bonding agents create a basis for comparison

Presently, adhesive tapes are not regulated by standards in Australia and New Zealand and there are no uniform minimum requirements that have to be fulfilled by products. However the recently published DIN 4108-11 2018 specifies minimum requirements for adhesives and tapes in Germany.

Note: DIN 4108-11; Thermal insulation and energy economy in buildings - Part 11: Minimum requirements to the durability of bond strength with adhesive tapes and adhesive masses for the establishment of airtight layers.



Adhesive tape after storage in water for 24 hours: Top: a conventional acrylate dispersion adhesive tape, re-emulsified with water; the adhesive has lost its strength. Bottom: pure acrylate on a solid basis is absolutely water-resistant.



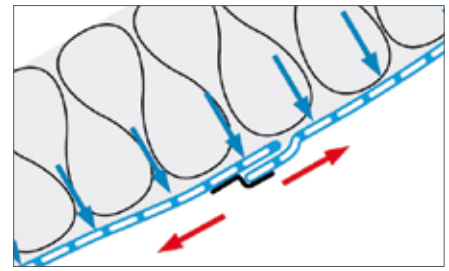
Cohesion adhesion test with 47 adhesive tapes: 40 adhesive tapes failed within two years in a long-term test with low loading.

This standard contains various tensile strength tests on standardised sub-surfaces such as wood and membranes, as well as the possibility of having systems (membranes and adhesive tape) tested by manufacturers.

Many of the requirements demanded from adhesive tapes described above are formulated in this standard. For example, the tapes are pressed into place in a defined manner before conducting a pull-off test, and the test is carried out with a low pull-off speed so as to simulate the long-acting, low tensile stresses that occur in real applications in this test. Ageing also forms part of the scope of the standard. The standard forms a good basis for comparing adhesive tapes with one another and can help installers and project planners to make informed decisions globally.

Summary: permanent adhesive joints are only possible with good systems and the right handling

Permanent adhesive joints on construction projects are feasible and can achieve reliable performance; nonetheless, damage to structures often occurs when joints become detached. Knowledge about the fundamentals of adhesion technology and about the loads that will actually be acting in practice is crucial in order to be able to carry out reliable project planning and testing too. An optimal end result can only be achieved with good handling, a high-quality subsurface and a suitable adhesive tape. All three of these criteria should be carefully considered by the specifier and



Actual loading in practice on site: the adhesive joint is subjected to low forces over a period of years, so sufficient cohesive strength is important.

the energy consultant on site. Manufacturers who make statements about the surface quality of their membranes and about the production technology used in their adhesive tapes (solid acrylate or acrylate dispersion) and who offer long market experience, 3rd party accreditation by reputable bodies (i.e. PHI, BBA, NSAI, BRANZ etc), appropriate ageing testing and engineering support should be preferred over suppliers who provide little or no information about their products.



DIN 4108-11 specifies laboratory tests that have to be carried out for all adhesive tapes. This creates consistent quality standards and provide a basis for users to compare products.



Soft adhesives perform better in the 'finger adhesion' test, as they are better able to wet the surface of the thumb. This can lead to problems in practical construction applications, as soft adhesives generally have low cohesion forces.

Author

Jens Lüder Herms, Dipl.-Ing. (FH), trained as a carpenter and then studied construction engineering. He develops practical solutions for sealing buildings as part of research and development at [pro clima technik@proclima.de](mailto:proclima.de)





Pro Clima New Zealand Ltd
PO Box 925
Wellington

welcome@proclima.co.nz
0800 PRO CLIMA (77 254)
www.proclima.co.nz

Pro Clima Australia Pty Ltd
PO Box 924
Gosford, NSW 2250

welcome@proclima.com.au
1800 PRO CLIMA (776 254)
www.proclima.com.au

